



# PKA I $\beta$ reg Monoclonal Antibody

Catalog No	BYmab-14926
Isotype	IgG
Reactivity	Human;Mouse;Rat
Applications	WB
Gene Name	PRKAR1B
Protein Name	cAMP-dependent protein kinase type I-beta regulatory subunit
Immunogen	The antiserum was produced against synthesized peptide derived from human KAP1. AA range:106-155
Specificity	PKA I $\beta$ reg Monoclonal Antibody detects endogenous levels of PKA I $\beta$ reg protein.
Formulation	Liquid in PBS containing 50% glycerol, 0.5% BSA and 0.02% sodium azide.
Source	Monoclonal, Mouse,IgG
Purification	The antibody was affinity-purified from mouse antiserum by affinity-chromatography using epitope-specific immunogen.
Dilution	WB 1:500-2000
Concentration	1 mg/ml
Purity	≥90%
Storage Stability	-20°C/1 year
Synonyms	PRKAR1B; cAMP-dependent protein kinase type I-beta regulatory subunit
Observed Band	43kD
Cell Pathway	Cell membrane .
Tissue Specificity	Four types of regulatory chains are found: I-alpha, I-beta, II-alpha, and II-beta. Their expression varies among tissues and is in some cases constitutive and in others inducible.
Function	PTM:The pseudophosphorylation site binds to the substrate-binding region of the catalytic chain, resulting in the inhibition of its activity.,similarity:Belongs to the cAMP-dependent kinase regulatory chain family.,similarity:Contains 2 cyclic nucleotide-binding domains.,subunit:The inactive form of the enzyme is composed of two regulatory chains and two catalytic chains. Activation by cAMP produces two active catalytic monomers and a regulatory dimer that binds four cAMP molecules.,tissue specificity:Four types of regulatory chains are found: I-alpha, I-beta, II-alpha, and II-beta. Their expression varies among tissues and is in some cases constitutive and in others inducible.,

Nanjing BYabscience technology Co.,Ltd



## Background

The protein encoded by this gene is a regulatory subunit of cyclic AMP-dependent protein kinase A (PKA), which is involved in the signaling pathway of the second messenger cAMP. Two regulatory and two catalytic subunits form the PKA holoenzyme, disbands after cAMP binding. The holoenzyme is involved in many cellular events, including ion transport, metabolism, and transcription. Several transcript variants encoding the same protein have been found for this gene. [provided by RefSeq, Aug 2015],

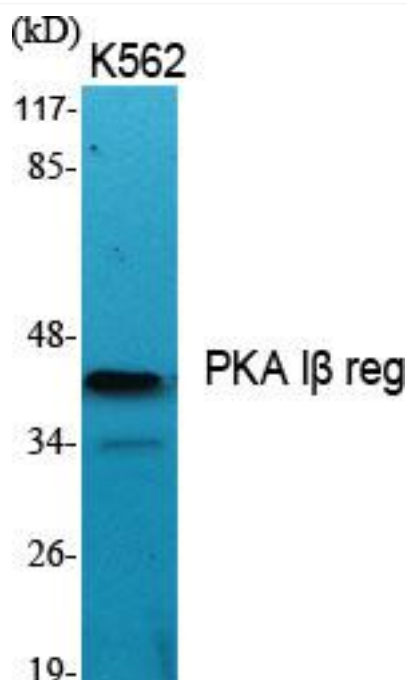
## matters needing attention

Avoid repeated freezing and thawing!

## Usage suggestions

This product can be used in immunological reaction related experiments. For more information, please consult technical personnel.

## Products Images



Western Blot analysis of various cells using PKA I $\beta$  reg Monoclonal Antibody