



PKA II β reg Monoclonal Antibody

Catalog No	BYmab-14924
Isotype	IgG
Reactivity	Human;Mouse;Rat
Applications	WB
Gene Name	PRKAR2B
Protein Name	cAMP-dependent protein kinase type II-beta regulatory subunit
Immunogen	The antiserum was produced against synthesized peptide derived from human PKA-R2 beta. AA range:79-128
Specificity	PKA II β reg Monoclonal Antibody detects endogenous levels of PKA II β reg protein.
Formulation	Liquid in PBS containing 50% glycerol, 0.5% BSA and 0.02% sodium azide.
Source	Monoclonal, Mouse,IgG
Purification	The antibody was affinity-purified from mouse antiserum by affinity-chromatography using epitope-specific immunogen.
Dilution	WB 1:500-2000
Concentration	1 mg/ml
Purity	≥90%
Storage Stability	-20°C/1 year
Synonyms	PRKAR2B; cAMP-dependent protein kinase type II-beta regulatory subunit
Observed Band	46kD
Cell Pathway	Cytoplasm . Cell membrane . Colocalizes with PJA2 in the cytoplasm and at the cell membrane.
Tissue Specificity	Four types of regulatory chains are found: I-alpha, I-beta, II-alpha, and II-beta. Their expression varies among tissues and is in some cases constitutive and in others inducible.
Function	function:Type II regulatory chains mediate membrane association by binding to anchoring proteins, including the MAP2 kinase.,PTM:Phosphorylated by the activated catalytic chain.,similarity:Belongs to the cAMP-dependent kinase regulatory chain family.,similarity:Contains 2 cyclic nucleotide-binding domains.,subunit:The inactive form of the enzyme is composed of two regulatory chains and two catalytic chains. Activation by cAMP produces two active catalytic monomers and a regulatory dimer that binds four cAMP molecules.,tissue specificity:Four types of regulatory chains are found: I-alpha, I-beta, II-alpha, and II-beta. Their expression varies among tissues and is in some cases constitutive

Nanjing BYabscience technology Co.,Ltd



and in others inducible.,

Background

cAMP is a signaling molecule important for a variety of cellular functions. cAMP exerts its effects by activating the cAMP-dependent protein kinase, which transduces the signal through phosphorylation of different target proteins. The inactive kinase holoenzyme is a tetramer composed of two regulatory and two catalytic subunits. cAMP causes the dissociation of the inactive holoenzyme into a dimer of regulatory subunits bound to four cAMP and two free monomeric catalytic subunits. Four different regulatory subunits and three catalytic subunits have been identified in humans. The protein encoded by this gene is one of the regulatory subunits. This subunit can be phosphorylated by the activated catalytic subunit. This subunit has been shown to interact with and suppress the transcriptional activity of the cAMP responsive element binding protein 1 (CREB1) in activ

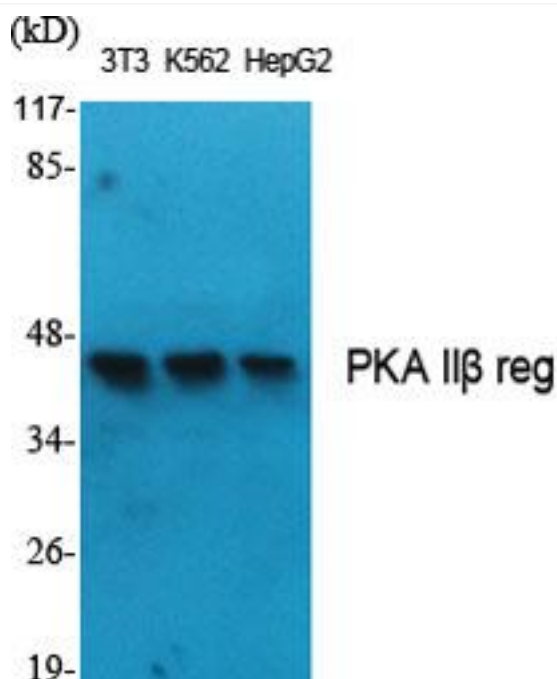
matters needing attention

Avoid repeated freezing and thawing!

Usage suggestions

This product can be used in immunological reaction related experiments. For more information, please consult technical personnel.

Products Images



Western Blot analysis of various cells using PKA II β reg Monoclonal Antibody

Nanjing BYabs science technology Co.,Ltd

网址: www.njbybio.com

官方热线: 025-5229-8998

监督电话: 15950492658