



PIX β Monoclonal Antibody

Catalog No	BYmab-14922
Isotype	IgG
Reactivity	Human;Mouse;Rat
Applications	WB
Gene Name	ARHGEF7
Protein Name	Rho guanine nucleotide exchange factor 7
Immunogen	The antiserum was produced against synthesized peptide derived from human ARHGEF7. AA range:311-360
Specificity	PIX β Monoclonal Antibody detects endogenous levels of PIX β protein.
Formulation	Liquid in PBS containing 50% glycerol, 0.5% BSA and 0.02% sodium azide.
Source	Monoclonal, Mouse,IgG
Purification	The antibody was affinity-purified from mouse antiserum by affinity-chromatography using epitope-specific immunogen.
Dilution	WB 1:500-2000
Concentration	1 mg/ml
Purity	$\geq 90\%$
Storage Stability	-20°C/1 year
Synonyms	ARHGEF7; COOL1; KIAA0142; P85SPR; PAK3BP; PIXB; Nbla10314; Rho guanine nucleotide exchange factor 7; Beta-Pix; COOL-1; PAK-interacting exchange factor beta; p85
Observed Band	80kD
Cell Pathway	Cell junction, focal adhesion . Cell projection, ruffle . Cytoplasm, cell cortex . Cell projection, lamellipodium . Detected at cell adhesions. A small proportion is detected at focal adhesions.
Tissue Specificity	Amygdala,Bone marrow,Brain,Epithelium,Neuroblastoma,Testis,
Function	function:Acts as a RAC1 guanine nucleotide exchange factor (GEF) and can induce membrane ruffling.,similarity:Contains 1 CH (calponin-homology) domain.,similarity:Contains 1 DH (DBL-homology) domain.,similarity:Contains 1 PH domain.,similarity:Contains 1 SH3 domain.,subunit:Interacts with PAK kinases through the SH3 domain. Interacts with GIT1 and TGFB111. Interacts with ITCH (By similarity). Interacts with unphosphorylated PAK1.,

Nanjing BYabscience technology Co.,Ltd



Background

This gene encodes a protein that belongs to a family of cytoplasmic proteins that activate the Ras-like family of Rho proteins by exchanging bound GDP for GTP. It forms a complex with the small GTP binding protein Rac1 and recruits Rac1 to membrane ruffles and to focal adhesions. Multiple alternatively spliced transcript variants encoding different isoforms have been observed for this gene. [provided by RefSeq, Mar 2016],

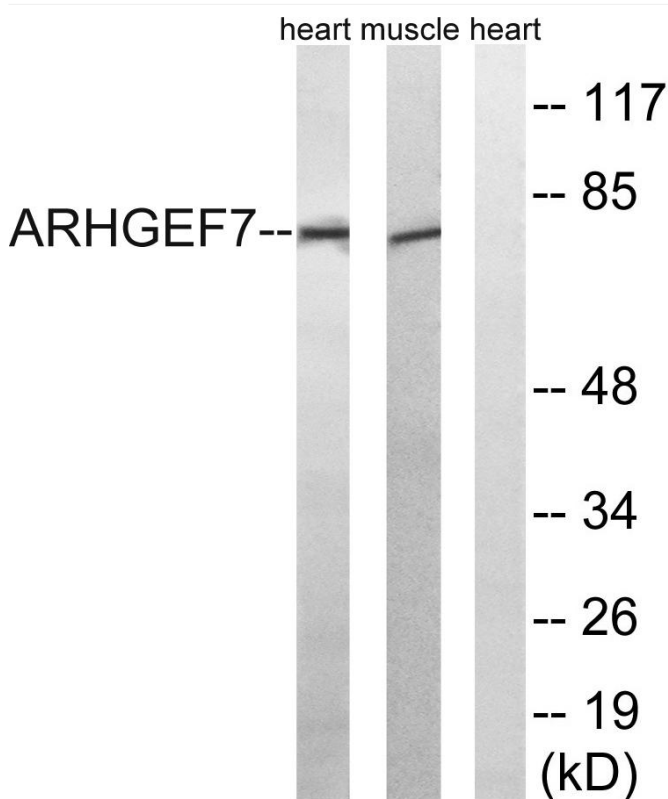
matters needing attention

Avoid repeated freezing and thawing!

Usage suggestions

This product can be used in immunological reaction related experiments. For more information, please consult technical personnel.

Products Images



Western Blot analysis of various cells using PIX β Monoclonal Antibody