



# PDIK1L Monoclonal Antibody

Catalog No	BYmab-14899
Isotype	IgG
Reactivity	Human;Mouse
Applications	WB
Gene Name	PDIK1L
Protein Name	Serine/threonine-protein kinase PDIK1L
Immunogen	The antiserum was produced against synthesized peptide derived from human PDIK1L. AA range:101-150
Specificity	PDIK1L Monoclonal Antibody detects endogenous levels of PDIK1L protein.
Formulation	Liquid in PBS containing 50% glycerol, 0.5% BSA and 0.02% sodium azide.
Source	Monoclonal, Mouse,IgG
Purification	The antibody was affinity-purified from mouse antiserum by affinity-chromatography using epitope-specific immunogen.
Dilution	WB 1:500-2000
Concentration	1 mg/ml
Purity	≥90%
Storage Stability	-20°C/1 year
Synonyms	PDIK1L; CLIK1L; Serine/threonine-protein kinase PDIK1L; PDLIM1-interacting kinase 1-like
Observed Band	39kD
Cell Pathway	Nucleus .
Tissue Specificity	Expressed in liver, kidney, pancreas, spleen, thymus and prostate.
Function	catalytic activity:ATP + a protein = ADP + a phosphoprotein.,similarity:Belongs to the protein kinase superfamily. Ser/Thr protein kinase family.,similarity:Contains 1 protein kinase domain.,tissue specificity:Expressed in liver, kidney, pancreas, spleen, thymus and prostate.,
Background	catalytic activity:ATP + a protein = ADP + a phosphoprotein.,similarity:Belongs to the protein kinase superfamily. Ser/Thr protein kinase family.,similarity:Contains 1 protein kinase domain.,tissue specificity:Expressed in liver, kidney, pancreas, spleen, thymus and prostate.,

Nanjing BYabscience technology Co.,Ltd



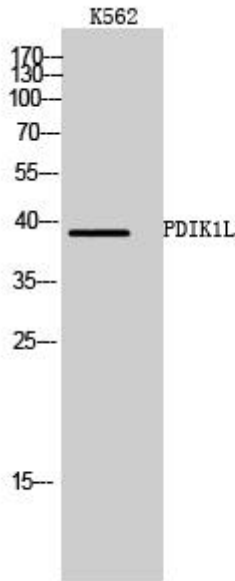
**matters needing attention**

Avoid repeated freezing and thawing!

**Usage suggestions**

This product can be used in immunological reaction related experiments. For more information, please consult technical personnel.

## Products Images



Western Blot analysis of various cells using PDIK1L Monoclonal Antibody