



# p52 S6 kinase Monoclonal Antibody

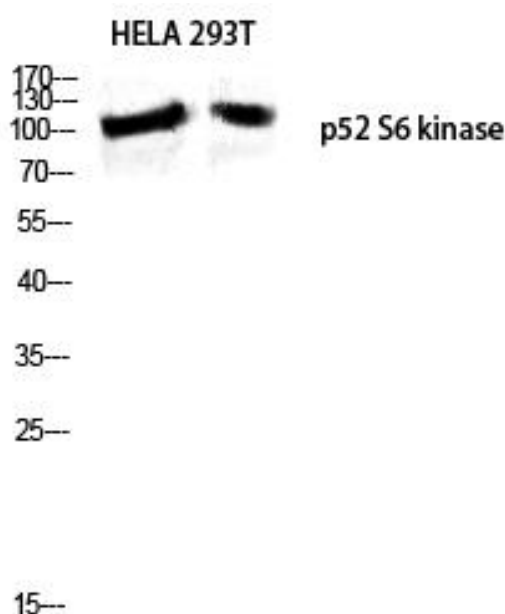
<b>Catalog No</b>	BYmab-14887
<b>Isotype</b>	IgG
<b>Reactivity</b>	Human;Mouse
<b>Applications</b>	WB
<b>Gene Name</b>	RPS6KC1
<b>Protein Name</b>	Ribosomal protein S6 kinase delta-1
<b>Immunogen</b>	The antiserum was produced against synthesized peptide derived from human RPS6KC1. AA range:231-280
<b>Specificity</b>	p52 S6 kinase Monoclonal Antibody detects endogenous levels of p52 S6 kinase protein.
<b>Formulation</b>	Liquid in PBS containing 50% glycerol, 0.5% BSA and 0.02% sodium azide.
<b>Source</b>	Monoclonal, Mouse,IgG
<b>Purification</b>	The antibody was affinity-purified from mouse antiserum by affinity-chromatography using epitope-specific immunogen.
<b>Dilution</b>	WB 1:500-2000
<b>Concentration</b>	1 mg/ml
<b>Purity</b>	≥90%
<b>Storage Stability</b>	-20°C/1 year
<b>Synonyms</b>	RPS6KC1; RPK118; Ribosomal protein S6 kinase delta-1; S6K-delta-1; 52 kDa ribosomal protein S6 kinase; Ribosomal S6 kinase-like protein with two PSK domains 118 kDa protein; SPHK1-binding protein
<b>Observed Band</b>	117kD
<b>Cell Pathway</b>	Cytoplasm . Membrane . Early endosome .
<b>Tissue Specificity</b>	Highly expressed in testis, skeletal muscle, brain, heart, placenta, kidney and liver and weakly expressed in thymus, small intestine, lung and colon.
<b>Function</b>	catalytic activity:ATP + a protein = ADP + a phosphoprotein..caution:Instead of Lys-820, Arg-820 is found at the binding site..domain:The first protein kinase domain appears to be a pseudokinase domain as it does not contain the classical characteristics, such as the ATP-binding motif, ATP-binding site and active site..function:May be involved in transmitting sphingosine-1 phosphate (SPP)-mediated signaling into the cell..similarity:Belongs to the protein kinase superfamily. Ser/Thr protein kinase family. S6 kinase subfamily..similarity:Contains 1 MIT domain..similarity:Contains 1 PX (phox

**Nanjing BYabscience technology Co.,Ltd**



	homology) domain.,similarity:Contains 2 protein kinase domains.,subcellular location:Also found in some small dot-like or ring-shaped early endosome structures.,subunit:Interacts with SPHK1 and phosphatidylinositol 3-phosphate.,tissue specificity:Highly expressed in testis, skeletal muscle, brain, hear
<b>Background</b>	catalytic activity:ATP + a protein = ADP + a phosphoprotein.,caution:Instead of Lys-820, Arg-820 is found at the binding site.,domain:The first protein kinase domain appears to be a pseudokinase domain as it does not contain the classical characteristics, such as the ATP-binding motif, ATP-binding site and active site.,function:May be involved in transmitting sphingosine-1 phosphate (SPP)-mediated signaling into the cell.,similarity:Belongs to the protein kinase superfamily. Ser/Thr protein kinase family. S6 kinase subfamily.,similarity:Contains 1 MIT domain.,similarity:Contains 1 PX (phox homology) domain.,similarity:Contains 2 protein kinase domains.,subcellular location:Also found in some small dot-like or ring-shaped early endosome structures.,subunit:Interacts with SPHK1 and phosphatidylinositol 3-phosphate.,tissue specificity:Highly expressed in testis, skeletal muscle, brain, heart, placenta, kidney and liver and weakly expressed in thymus, small intestine, lung and colon.,
<b>matters needing attention</b>	Avoid repeated freezing and thawing!
<b>Usage suggestions</b>	This product can be used in immunological reaction related experiments. For more information, please consult technical personnel.

## Products Images



Western Blot analysis of various cells using p52 S6 kinase Monoclonal Antibody