



# Nek7 Monoclonal Antibody

<b>Catalog No</b>	BYmab-14877
<b>Isotype</b>	IgG
<b>Reactivity</b>	Human;Mouse
<b>Applications</b>	WB
<b>Gene Name</b>	NEK7
<b>Protein Name</b>	Serine/threonine-protein kinase Nek7
<b>Immunogen</b>	The antiserum was produced against synthesized peptide derived from human NEK7. AA range:101-150
<b>Specificity</b>	Nek7 Monoclonal Antibody detects endogenous levels of Nek7 protein.
<b>Formulation</b>	Liquid in PBS containing 50% glycerol, 0.5% BSA and 0.02% sodium azide.
<b>Source</b>	Monoclonal, Mouse,IgG
<b>Purification</b>	The antibody was affinity-purified from mouse antiserum by affinity-chromatography using epitope-specific immunogen.
<b>Dilution</b>	WB 1:500-2000
<b>Concentration</b>	1 mg/ml
<b>Purity</b>	≥90%
<b>Storage Stability</b>	-20°C/1 year
<b>Synonyms</b>	NEK7; Serine/threonine-protein kinase Nek7; Never in mitosis A-related kinase 7; NimA-related protein kinase 7
<b>Observed Band</b>	35kD
<b>Cell Pathway</b>	Nucleus . Cytoplasm . Cytoplasm, cytoskeleton, spindle pole . Cytoplasm, cytoskeleton, microtubule organizing center, centrosome . Present at centrosome throughout the cell cycle (PubMed:17586473). Also detected at spindle midzone of the anaphase cells and eventually concentrates at the midbody (PubMed:17586473). Interaction with ANKS3 prevents its translocation to the nucleus (By similarity). .
<b>Tissue Specificity</b>	Highly expressed in lung, muscle, testis, brain, heart, liver, leukocyte and spleen. Lower expression in ovary, prostate and kidney. No expression seen in small intestine.
<b>Function</b>	catalytic activity:ATP + a protein = ADP + a phosphoprotein.,cofactor:Magnesium.,similarity:Belongs to the protein kinase superfamily.,similarity:Belongs to the protein kinase superfamily. NEK Ser/Thr protein kinase family. NIMA subfamily.,similarity:Contains 1 protein kinase domain.,tissue specificity:Highly expressed in lung, muscle, testis, brain, heart,

**Nanjing BYabscience technology Co.,Ltd**



liver, leukocyte and spleen. Lower expression in ovary, prostate and kidney. No expression seen in small intestine.,

#### Background

NIMA-related kinases share high amino acid sequence identity with the gene product of the *Aspergillus nidulans* 'never in mitosis A' gene, which controls initiation of mitosis.[supplied by OMIM, Jul 2002],

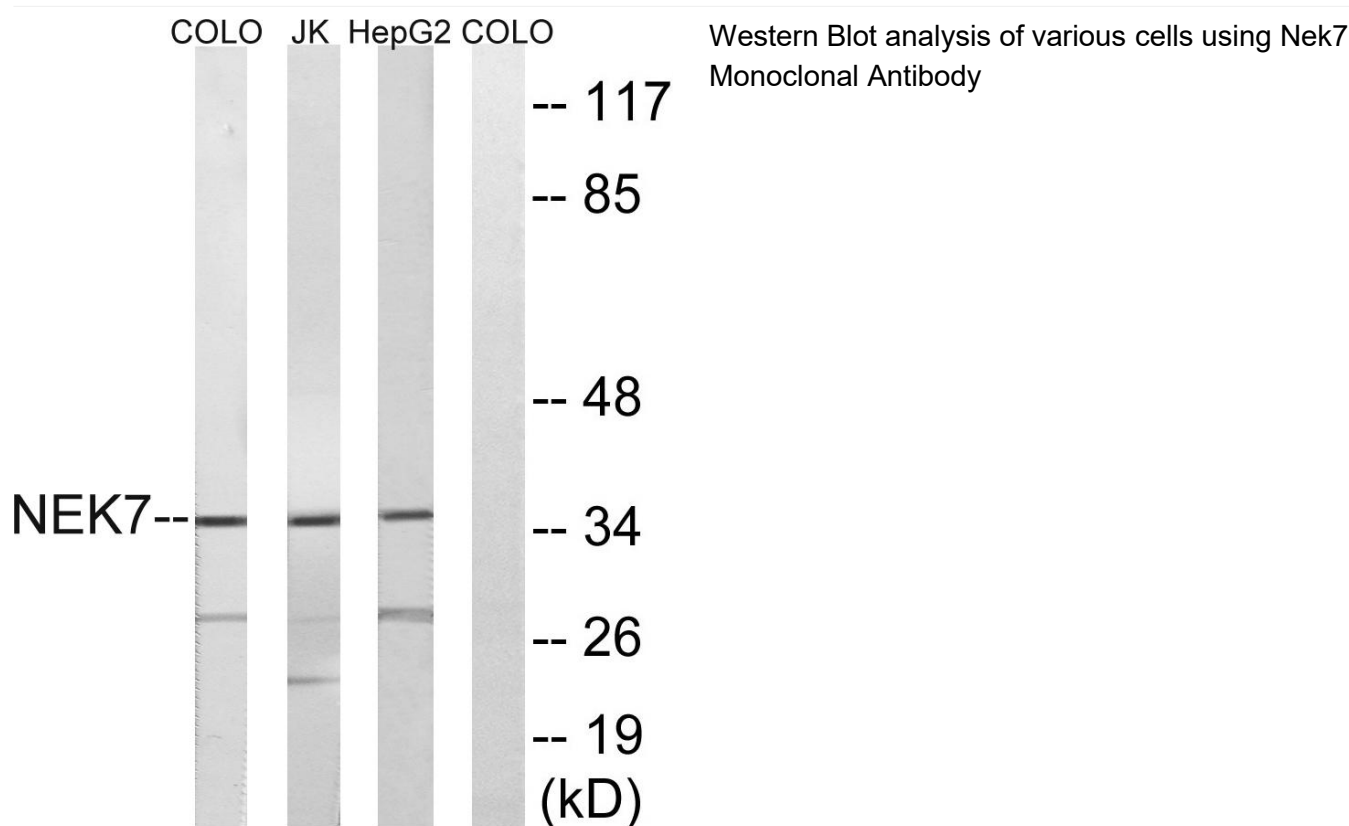
#### matters needing attention

Avoid repeated freezing and thawing!

#### Usage suggestions

This product can be used in immunological reaction related experiments. For more information, please consult technical personnel.

### Products Images



Nanjing BYabscience technology Co.,Ltd