



MSK2 Monoclonal Antibody

Catalog No	BYmab-14865
Isotype	IgG
Reactivity	Human;Mouse
Applications	WB
Gene Name	RPS6KA4
Protein Name	Ribosomal protein S6 kinase alpha-4
Immunogen	The antiserum was produced against synthesized peptide derived from human MSK2. AA range:531-580
Specificity	MSK2 Monoclonal Antibody detects endogenous levels of MSK2 protein.
Formulation	Liquid in PBS containing 50% glycerol, 0.5% BSA and 0.02% sodium azide.
Source	Monoclonal, Mouse,IgG
Purification	The antibody was affinity-purified from mouse antiserum by affinity-chromatography using epitope-specific immunogen.
Dilution	WB 1:500-2000
Concentration	1 mg/ml
Purity	≥90%
Storage Stability	-20°C/1 year
Synonyms	RPS6KA4; MSK2; Ribosomal protein S6 kinase alpha-4; S6K-alpha-4; 90 kDa ribosomal protein S6 kinase 4; Nuclear mitogen- and stress-activated protein kinase 2; Ribosomal protein kinase B; RSKB
Observed Band	86kD
Cell Pathway	Nucleus .
Tissue Specificity	Blood,Brain,Placenta,
Function	catalytic activity:ATP + a protein = ADP + a phosphoprotein.,cofactor:Magnesium.,enzyme regulation:Appears to be activated by multiple phosphorylations on threonine and serine residues. ERK1/2 and p38 kinases may play a role in this process.,function:Serine/threonine kinase that may play a role in mediating the growth-factor and stress induced activation of the transcription factor CREB. Essential role in the control of RELA transcriptional activity in response to TNF. Phosphorylates 'Ser-10' of histone H3 in response to mitogenics, stress stimuli and epidermal growth-factor (EGF) and result in the transcriptional activation of several immediate early genes, including

Nanjing BYabscience technology Co.,Ltd



proto-oncogenes FOS and JUN (By similarity). Mediates the mitogen- and stress-induced phosphorylation of high mobility group protein 14 (HMG-14).,miscellaneous:Enzyme activity requires the presence of both kinase domains.,si

Background

ribosomal protein S6 kinase A4(RPS6KA4) Homo sapiens This gene encodes a member of the RSK (ribosomal S6 kinase) family of serine/threonine kinases. This kinase contains 2 non-identical kinase catalytic domains and phosphorylates various substrates, including CREB1 and ATF1. The encoded protein can also phosphorylate histone H3 to regulate certain inflammatory genes. Several transcript variants encoding different isoforms have been found for this gene. [provided by RefSeq, Jan 2016],

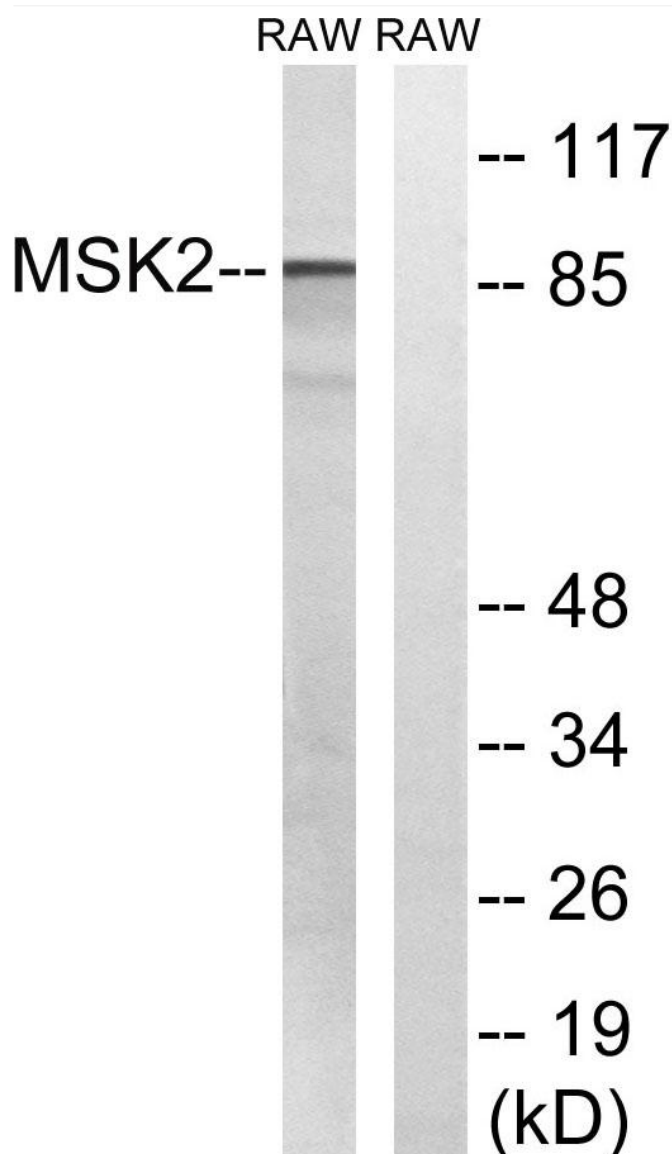
matters needing attention

Avoid repeated freezing and thawing!

Usage suggestions

This product can be used in immunological reaction related experiments. For more information, please consult technical personnel.

Products Images



Western Blot analysis of various cells using MSK2 Monoclonal Antibody

Nanjing BYabs science technology Co.,Ltd