



# LIMK-2 Monoclonal Antibody

<b>Catalog No</b>	BYmab-14815
<b>Isotype</b>	IgG
<b>Reactivity</b>	Human;Mouse;Rat
<b>Applications</b>	WB
<b>Gene Name</b>	LIMK2
<b>Protein Name</b>	LIM domain kinase 2
<b>Immunogen</b>	The antiserum was produced against synthesized peptide derived from human LIMK2. AA range:249-298
<b>Specificity</b>	LIMK-2 Monoclonal Antibody detects endogenous levels of LIMK-2 protein.
<b>Formulation</b>	Liquid in PBS containing 50% glycerol, 0.5% BSA and 0.02% sodium azide.
<b>Source</b>	Monoclonal, Mouse,IgG
<b>Purification</b>	The antibody was affinity-purified from mouse antiserum by affinity-chromatography using epitope-specific immunogen.
<b>Dilution</b>	WB 1:500-2000
<b>Concentration</b>	1 mg/ml
<b>Purity</b>	≥90%
<b>Storage Stability</b>	-20°C/1 year
<b>Synonyms</b>	LIMK2; LIM domain kinase 2; LIMK-2
<b>Observed Band</b>	72kD
<b>Cell Pathway</b>	Cytoplasm, cytoskeleton, spindle . Cytoplasm, cytoskeleton, microtubule organizing center, centrosome .; [Isoform LIMK2a]: Cytoplasm . Nucleus .; [Isoform LIMK2b]: Cytoplasm . Cytoplasm, perinuclear region . Nucleus . Mainly present in the cytoplasm and is scarcely translocated to the nucleus. .
<b>Tissue Specificity</b>	Hepatoma,Lung,Ovary,
<b>Function</b>	catalytic activity:ATP + a protein = ADP + a phosphoprotein.,function:Displays serine/threonine-specific phosphorylation of myelin basic protein and histone (MBP) in vitro.,PTM:Phosphorylated on serine and/or threonine residues by ROCK1.,similarity:Belongs to the protein kinase superfamily. TKL Ser/Thr protein kinase family.,similarity:Contains 1 PDZ (DHR) domain.,similarity:Contains 1 protein kinase domain.,similarity:Contains 2 LIM zinc-binding domains.,subcellular location:Isoform LIMK2a is distributed in the cytoplasm and the nucleus.,subcellular location:Isoform LIMK2b occurs mainly in the cytoplasm and is scarcely translocated to the nucleus.,subunit:Binds ROCK1 and LKAP.

**Nanjing BYabscience technology Co.,Ltd**



Interacts with PARD3. Interacts with NISCH., tissue specificity: Highest expression in the placenta; moderate level in liver, lung, kidney, and pancreas. LIMK2a is found to be more abundant than LIMK2b in liver, col

## Background

There are approximately 40 known eukaryotic LIM proteins, so named for the LIM domains they contain. LIM domains are highly conserved cysteine-rich structures containing 2 zinc fingers. Although zinc fingers usually function by binding to DNA or RNA, the LIM motif probably mediates protein-protein interactions. LIM kinase-1 and LIM kinase-2 belong to a small subfamily with a unique combination of 2 N-terminal LIM motifs and a C-terminal protein kinase domain. The protein encoded by this gene is phosphorylated and activated by ROCK, a downstream effector of Rho, and the encoded protein, in turn, phosphorylates cofilin, inhibiting its actin-depolymerizing activity. It is thought that this pathway contributes to Rho-induced reorganization of the actin cytoskeleton. At least three transcript variants encoding different isoforms have been found for this gene. [provided by RefSeq, Jul 2008],

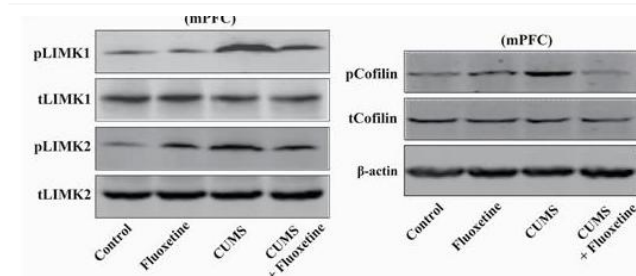
## matters needing attention

Avoid repeated freezing and thawing!

## Usage suggestions

This product can be used in immunological reaction related experiments. For more information, please consult technical personnel.

## Products Images



Western Blot analysis of various cells using LIMK-2 Monoclonal Antibody

**Nanjing BYabs science technology Co.,Ltd**