



IP6K2 Monoclonal Antibody

Catalog No	BYmab-14793
Isotype	IgG
Reactivity	Human;Mouse;Rat
Applications	WB
Gene Name	IP6K2
Protein Name	Inositol hexakisphosphate kinase 2
Immunogen	The antiserum was produced against synthesized peptide derived from human IP6K2. AA range:161-210
Specificity	IP6K2 Monoclonal Antibody detects endogenous levels of IP6K2 protein.
Formulation	Liquid in PBS containing 50% glycerol, 0.5% BSA and 0.02% sodium azide.
Source	Monoclonal, Mouse,IgG
Purification	The antibody was affinity-purified from mouse antiserum by affinity-chromatography using epitope-specific immunogen.
Dilution	WB 1:500-2000
Concentration	1 mg/ml
Purity	≥90%
Storage Stability	-20°C/1 year
Synonyms	IP6K2; IHPK2; TCCCIA00113; Inositol hexakisphosphate kinase 2; InsP6 kinase 2; P(i)-uptake stimulator; PiUS
Observed Band	49kD
Cell Pathway	Nucleus .
Tissue Specificity	Caudate nucleus,Glial tumor,Leukemia,Lung,Skin,Uterus,
Function	catalytic activity:ATP + 1D-myo-inositol 1,3,4,5,6-pentakisphosphate = ADP + diphospho-1D-myo-inositol tetrakisphosphate (isomeric configuration unknown).,catalytic activity:ATP + 1D-myo-inositol hexakisphosphate = ADP + 5-diphospho-1D-myo-inositol (1,2,3,4,6)pentakisphosphate.,function:Converts inositol hexakisphosphate (InsP6) to diphosphoinositol pentakisphosphate (InsP7/PP-InsP5). Converts 1,3,4,5,6-pentakisphosphate (InsP5) to PP-InsP4.,similarity:Belongs to the inositol phosphokinase (IPK) family.,
Background	This gene encodes a protein that belongs to the inositol phosphokinase (IPK) family. This protein is likely responsible for the conversion of inositol hexakisphosphate (InsP6) to diphosphoinositol pentakisphosphate

Nanjing BYabscience technology Co.,Ltd



(InsP7/PP-InsP5). It may also convert 1,3,4,5,6-pentakisphosphate (InsP5) to PP-InsP4 and affect the growth suppressive and apoptotic activities of interferon-beta in some ovarian cancers. Alternative splicing results in multiple transcript variants encoding different isoforms. [provided by RefSeq, Jul 2008],

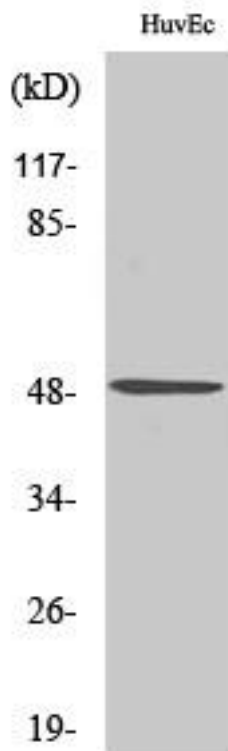
matters needing attention

Avoid repeated freezing and thawing!

Usage suggestions

This product can be used in immunological reaction related experiments. For more information, please consult technical personnel.

Products Images



Western Blot analysis of various cells using IP6K2 Monoclonal Antibody