



# GRK 7 Monoclonal Antibody

|                           |   |
|---------------------------|---|
| <b>Catalog No</b>         | BYmab-14768   |
| <b>Isotype</b>            | IgG   |
| <b>Reactivity</b>         | Human;Rat;Mouse;  |
| <b>Applications</b>       | WB  |
| <b>Gene Name</b>          | GRK7  |
| <b>Protein Name</b>       | G protein-coupled receptor kinase 7   |
| <b>Immunogen</b>          | The antiserum was produced against synthesized peptide derived from human GRK7. AA range:371-420  |
| <b>Specificity</b>        | GRK 7 Monoclonal Antibody detects endogenous levels of GRK 7 protein.   |
| <b>Formulation</b>        | Liquid in PBS containing 50% glycerol, 0.5% BSA and 0.02% sodium azide.   |
| <b>Source</b>             | Monoclonal, Mouse,IgG   |
| <b>Purification</b>       | The antibody was affinity-purified from mouse antiserum by affinity-chromatography using epitope-specific immunogen.  |
| <b>Dilution</b>           | WB 1:500-2000   |
| <b>Concentration</b>      | 1 mg/ml   |
| <b>Purity</b>             | ≥90%  |
| <b>Storage Stability</b>  | -20°C/1 year  |
| <b>Synonyms</b>           | GRK7; GPRK7; G protein-coupled receptor kinase 7; G protein-coupled receptor kinase GRK7  |
| <b>Observed Band</b>      | 62kD  |
| <b>Cell Pathway</b>       | Membrane ; Lipid-anchor .   |
| <b>Tissue Specificity</b> | Retinal cones, outer and inner segments.  |
| <b>Function</b>           | catalytic activity:ATP + [G-protein-coupled receptor] = ADP + [G-protein-coupled receptor] phosphate.,function:Phosphorylates cone opsins thereby initiating their deactivation.,similarity:Belongs to the protein kinase superfamily. AGC Ser/Thr protein kinase family. GPRK subfamily.,similarity:Contains 1 AGC-kinase C-terminal domain.,similarity:Contains 1 protein kinase domain.,similarity:Contains 1 RGS domain.,tissue specificity:Retina. Cones and rod., |
| <b>Background</b>         | This gene encodes a member of the guanine nucleotide-binding protein (G protein)-coupled receptor kinase subfamily of the Ser/Thr protein kinase family. It is specifically expressed in the retina and the encoded protein has been shown to   |

**Nanjing BYabscience technology Co.,Ltd**



phosphorylate cone opsins and initiate their deactivation. [provided by RefSeq, Jul 2008],

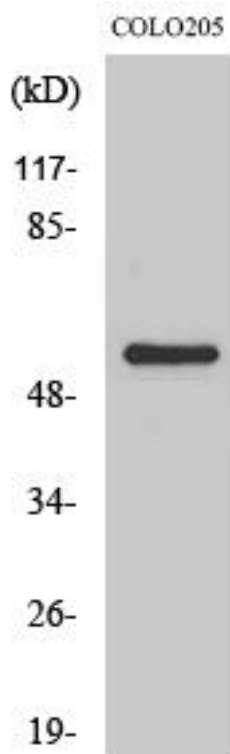
**matters needing attention**

Avoid repeated freezing and thawing!

**Usage suggestions**

This product can be used in immunological reaction related experiments. For more information, please consult technical personnel.

## Products Images



Western Blot analysis of various cells using GRK 7 Monoclonal Antibody