



# GLK Monoclonal Antibody

<b>Catalog No</b>	BYmab-14760
<b>Isotype</b>	IgG
<b>Reactivity</b>	Human;Mouse;Rat
<b>Applications</b>	WB
<b>Gene Name</b>	MAP4K3
<b>Protein Name</b>	Mitogen-activated protein kinase kinase kinase 3
<b>Immunogen</b>	The antiserum was produced against synthesized peptide derived from human MAP4K3. AA range:10-59
<b>Specificity</b>	GLK Monoclonal Antibody detects endogenous levels of GLK protein.
<b>Formulation</b>	Liquid in PBS containing 50% glycerol, 0.5% BSA and 0.02% sodium azide.
<b>Source</b>	Monoclonal, Mouse,IgG
<b>Purification</b>	The antibody was affinity-purified from mouse antiserum by affinity-chromatography using epitope-specific immunogen.
<b>Dilution</b>	WB 1:500-2000
<b>Concentration</b>	1 mg/ml
<b>Purity</b>	≥90%
<b>Storage Stability</b>	-20°C/1 year
<b>Synonyms</b>	MAP4K3; RAB8IPL1; Mitogen-activated protein kinase kinase kinase 3; Germinal center kinase-related protein kinase; GLK; MAPK/ERK kinase kinase 3; MEK kinase kinase 3; MEKKK 3
<b>Observed Band</b>	101kD
<b>Cell Pathway</b>	intracellular,cytoplasm,
<b>Tissue Specificity</b>	Ubiquitously expressed in all tissues examined, with high levels in heart, brain, placenta, skeletal muscle, kidney and pancreas and lower levels in lung and liver.
<b>Function</b>	catalytic activity:ATP + a protein = ADP + a phosphoprotein.,cofactor:Magnesium.,function:May play a role in the response to environmental stress. Appears to act upstream of the JUN N-terminal pathway.,similarity:Belongs to the protein kinase superfamily. STE Ser/Thr protein kinase family. STE20 subfamily.,similarity:Contains 1 CNH domain.,similarity:Contains 1 protein kinase domain.,subunit:Interacts with SH3GL2. Interaction appears to regulate MAP4K3-mediated JNK activation.,tissue specificity:Ubiquitously expressed in all tissues examined, with high levels in heart, brain, placenta, skeletal muscle, kidney and pancreas and

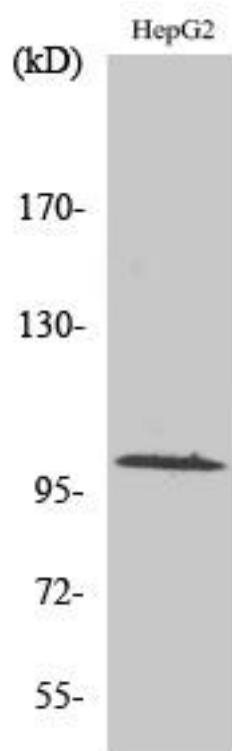
**Nanjing BYabscience technology Co.,Ltd**



lower levels in lung and liver.,

<b>Background</b>	mitogen-activated protein kinase kinase kinase 3(MAP4K3) Homo sapiens This gene encodes a member of the mitogen-activated protein kinase kinase kinase family. The encoded protein activates key effectors in cell signalling, among them c-Jun. Alternatively spliced transcripts encoding multiple isoforms have been observed for this gene. [provided by RefSeq, Jul 2012],
<b>matters needing attention</b>	Avoid repeated freezing and thawing!
<b>Usage suggestions</b>	This product can be used in immunological reaction related experiments. For more information, please consult technical personnel.

## Products Images



Western Blot analysis of various cells using GLK Monoclonal Antibody

Nanjing BYabs science technology Co.,Ltd

网址: [www.njbybio.com](http://www.njbybio.com)

官方热线: 025-5229-8998

监督电话: 15950492658