



# GK1 Monoclonal Antibody

<b>Catalog No</b>	BYmab-14756
<b>Isotype</b>	IgG
<b>Reactivity</b>	Human;Mouse;Rat
<b>Applications</b>	WB
<b>Gene Name</b>	GK
<b>Protein Name</b>	Glycerol kinase
<b>Immunogen</b>	The antiserum was produced against synthesized peptide derived from human GK. AA range:461-510
<b>Specificity</b>	GK1 Monoclonal Antibody detects endogenous levels of GK1 protein.
<b>Formulation</b>	Liquid in PBS containing 50% glycerol, 0.5% BSA and 0.02% sodium azide.
<b>Source</b>	Monoclonal, Mouse,IgG
<b>Purification</b>	The antibody was affinity-purified from mouse antiserum by affinity-chromatography using epitope-specific immunogen.
<b>Dilution</b>	WB 1:500-2000
<b>Concentration</b>	1 mg/ml
<b>Purity</b>	≥90%
<b>Storage Stability</b>	-20°C/1 year
<b>Synonyms</b>	GK; Glycerol kinase; GK; Glycerokinase; ATP:glycerol 3-phosphotransferase
<b>Observed Band</b>	57kD
<b>Cell Pathway</b>	Mitochondrion outer membrane; Peripheral membrane protein; Cytoplasmic side. Cytoplasm. In sperm and fetal tissues, the majority of the enzyme is bound to mitochondria, but in adult tissues, such as liver found in the cytoplasm.
<b>Tissue Specificity</b>	Highly expressed in the liver, kidney and testis. Isoform 2 and isoform 3 are expressed specifically in testis and fetal liver, but not in the adult liver.
<b>Function</b>	catalytic activity:ATP + glycerol = ADP + sn-glycerol 3-phosphate.,caution:The sequence shown here is derived from an Ensembl automatic analysis pipeline and should be considered as preliminary data.,disease:Defects in GK are the cause of GK deficiency (GKD) [MIM:307030]. This disease can be either symptomatic with episodic metabolic and CNS decompensation or asymptomatic with hyperglycerolemia and hyperglyceroluria only.,function:Key enzyme in the regulation of glycerol uptake and metabolism.,pathway:Polyol metabolism; glycerol degradation via glycerol kinase pathway; sn-glycerol 3-phosphate from glycerol: step 1/1.,similarity:Belongs to the FGGY kinase family.,subcellular location:In sperm and fetal tissues, the majority of the enzyme is bound to

**Nanjing BYabscience technology Co.,Ltd**



mitochondria, but in adult tissues, such as liver found in the cytoplasm.,tissue specificity:Highly expressed in the liver, kidney and testis

#### Background

The protein encoded by this gene belongs to the FGGY kinase family. This protein is a key enzyme in the regulation of glycerol uptake and metabolism. It catalyzes the phosphorylation of glycerol by ATP, yielding ADP and glycerol-3-phosphate. Mutations in this gene are associated with glycerol kinase deficiency (GKD). Alternatively spliced transcript variants encoding different isoforms have been found for this gene. [provided by RefSeq, Mar 2011],

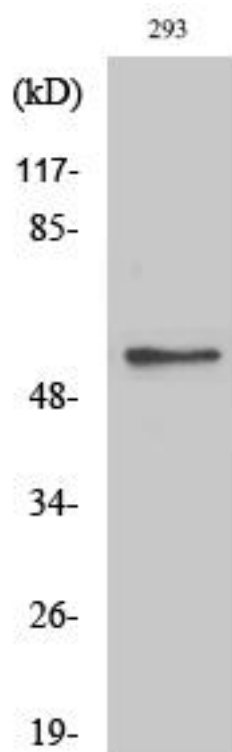
#### matters needing attention

Avoid repeated freezing and thawing!

#### Usage suggestions

This product can be used in immunological reaction related experiments. For more information, please consult technical personnel.

## Products Images



Western Blot analysis of various cells using GK1 Monoclonal Antibody