



DRAK2 Monoclonal Antibody

Catalog No	BYmab-14732
Isotype	IgG
Reactivity	Human;Mouse;Rat
Applications	WB
Gene Name	STK17B
Protein Name	Serine/threonine-protein kinase 17B
Immunogen	The antiserum was produced against synthesized peptide derived from human STK17B. AA range:251-300
Specificity	DRAK2 Monoclonal Antibody detects endogenous levels of DRAK2 protein.
Formulation	Liquid in PBS containing 50% glycerol, 0.5% BSA and 0.02% sodium azide.
Source	Monoclonal, Mouse,IgG
Purification	The antibody was affinity-purified from mouse antiserum by affinity-chromatography using epitope-specific immunogen.
Dilution	WB 1:500-2000
Concentration	1 mg/ml
Purity	≥90%
Storage Stability	-20°C/1 year
Synonyms	STK17B; DRAK2; Serine/threonine-protein kinase 17B; DAP kinase-related apoptosis-inducing protein kinase 2
Observed Band	45kD
Cell Pathway	Nucleus . Cell membrane . Endoplasmic reticulum-Golgi intermediate compartment . Colocalizes with STK17B at the plasma membrane. .
Tissue Specificity	Highly expressed in placenta, lung, pancreas. Lower levels in heart, brain, liver, skeletal muscle and kidney.
Function	catalytic activity:ATP + a protein = ADP + a phosphoprotein.,function:Acts as a positive regulator of apoptosis.,PTM:Autophosphorylated.,similarity:Belongs to the protein kinase superfamily.,similarity:Belongs to the protein kinase superfamily. CAMK Ser/Thr protein kinase family. DAP kinase subfamily.,similarity:Contains 1 protein kinase domain.,subunit:Interacts with CHP causing CHP to translocate from the Golgi to the nucleus.,tissue specificity:Highly expressed in placenta, lung, pancreas. Lower levels in heart, brain, liver, skeletal muscle and kidney.,

Nanjing BYabscience technology Co.,Ltd

网址: www.njbybio.com

官方热线: 025-5229-8998

监督电话: 15950492658



Background

catalytic activity:ATP + a protein = ADP + a phosphoprotein.,function:Acts as a positive regulator of apoptosis.,PTM:Autophosphorylated.,similarity:Belongs to the protein kinase superfamily.,similarity:Belongs to the protein kinase superfamily. CAMK Ser/Thr protein kinase family. DAP kinase subfamily.,similarity:Contains 1 protein kinase domain.,subunit:Interacts with CHP causing CHP to translocate from the Golgi to the nucleus.,tissue specificity:Highly expressed in placenta, lung, pancreas. Lower levels in heart, brain, liver, skeletal muscle and kidney.,

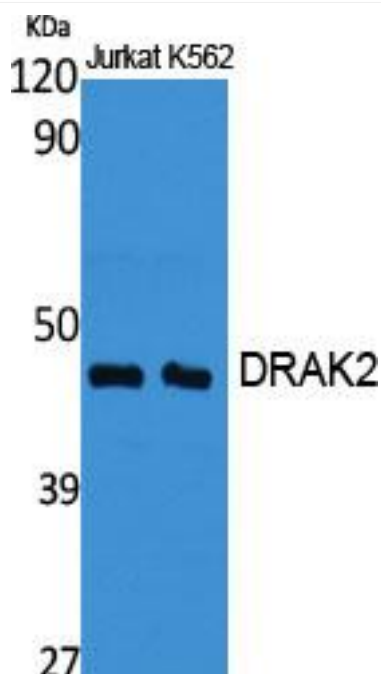
matters needing attention

Avoid repeated freezing and thawing!

Usage suggestions

This product can be used in immunological reaction related experiments. For more information, please consult technical personnel.

Products Images



Western Blot analysis of various cells using DRAK2 Monoclonal Antibody