



C-TAK1 Monoclonal Antibody

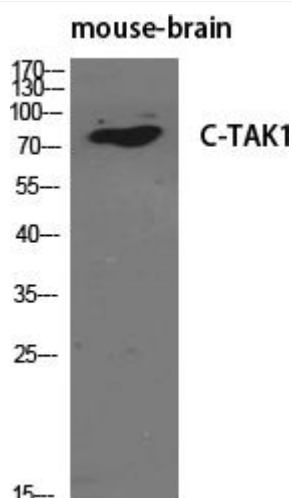
Catalog No	BYmab-14717
Isotype	IgG
Reactivity	Human;Mouse;Rat
Applications	WB
Gene Name	MARK3
Protein Name	MAP/microtubule affinity-regulating kinase 3
Immunogen	The antiserum was produced against synthesized peptide derived from human MARK3. AA range:1-50
Specificity	C-TAK1 Monoclonal Antibody detects endogenous levels of C-TAK1 protein.
Formulation	Liquid in PBS containing 50% glycerol, 0.5% BSA and 0.02% sodium azide.
Source	Monoclonal, Mouse,IgG
Purification	The antibody was affinity-purified from mouse antiserum by affinity-chromatography using epitope-specific immunogen.
Dilution	WB 1:500-2000
Concentration	1 mg/ml
Purity	≥90%
Storage Stability	-20°C/1 year
Synonyms	MARK3; CTAK1; EMK2; MAP/microtubule affinity-regulating kinase 3; C-TAK1; cTAK1; Cdc25C-associated protein kinase 1; ELKL motif kinase 2; EMK-2; Protein kinase STK10; Ser/Thr protein kinase PAR-1; Par-1a; Serine/threonine-protein kinase p78
Observed Band	85kD
Cell Pathway	Cell membrane ; Peripheral membrane protein . Cell projection, dendrite . Cytoplasm .
Tissue Specificity	Ubiquitous.
Function	catalytic activity:ATP + a protein = ADP + a phosphoprotein.,function:Involved in the specific phosphorylation of microtubule-associated proteins for tau, MAP2 and MAP4. Phosphorylates CDC25C on 'Ser-216'. ,similarity:Belongs to the protein kinase superfamily. CAMK Ser/Thr protein kinase family. MARK subfamily.,similarity:Contains 1 KA1 (kinase-associated) domain.,similarity:Contains 1 protein kinase domain.,similarity:Contains 1 UBA domain.,tissue specificity:Ubiquitous.,

Nanjing BYabscience technology Co.,Ltd



Background	microtubule affinity regulating kinase 3(MARK3) Homo sapiens The protein encoded by this gene is activated by phosphorylation and in turn is involved in the phosphorylation of tau proteins MAP2 and MAP4. Several transcript variants encoding different isoforms have been found for this gene. [provided by RefSeq, Oct 2011],
matters needing attention	Avoid repeated freezing and thawing!
Usage suggestions	This product can be used in immunological reaction related experiments. For more information, please consult technical personnel.

Products Images



Western Blot analysis of various cells using C-TAK1 Monoclonal Antibody