



CLK1 Monoclonal Antibody

Catalog No	BYmab-14709
Isotype	IgG
Reactivity	Human;Mouse
Applications	WB
Gene Name	CLK1
Protein Name	Dual specificity protein kinase CLK1
Immunogen	The antiserum was produced against synthesized peptide derived from human CLK1. AA range:101-150
Specificity	CLK1 Monoclonal Antibody detects endogenous levels of CLK1 protein.
Formulation	Liquid in PBS containing 50% glycerol, 0.5% BSA and 0.02% sodium azide.
Source	Monoclonal, Mouse,IgG
Purification	The antibody was affinity-purified from mouse antiserum by affinity-chromatography using epitope-specific immunogen.
Dilution	WB 1:500-2000
Concentration	1 mg/ml
Purity	≥90%
Storage Stability	-20°C/1 year
Synonyms	CLK1; CLK; Dual specificity protein kinase CLK1; CDC-like kinase 1
Observed Band	57kD
Cell Pathway	Nucleus.
Tissue Specificity	Endothelial cells.
Function	catalytic activity:ATP + a protein = ADP + a phosphoprotein.,function:Phosphorylates serine- and arginine-rich (SR) proteins of the spliceosomal complex may be a constituent of a network of regulatory mechanisms that enable SR proteins to control RNA splicing. Phosphorylates serines, threonines and tyrosines.,PTM:Autophosphorylates on all three types of residues.,similarity:Belongs to the protein kinase superfamily.,similarity:Belongs to the protein kinase superfamily. CMGC Ser/Thr protein kinase family. Lammer subfamily.,similarity:Contains 1 protein kinase domain.,subunit:Interacts with PPIG.,

Nanjing BYabscience technology Co.,Ltd

网址: www.njbybio.com

官方热线: 025-5229-8998

监督电话: 15950492658



Background

CDC like kinase 1 (CLK1) Homo sapiens This gene encodes a member of the CDC2-like (or LAMMER) family of dual specificity protein kinases. In the nucleus, the encoded protein phosphorylates serine/arginine-rich proteins involved in pre-mRNA processing, releasing them into the nucleoplasm. The choice of splice sites during pre-mRNA processing may be regulated by the concentration of transacting factors, including serine/arginine rich proteins. Therefore, the encoded protein may play an indirect role in governing splice site selection. Multiple transcript variants encoding different isoforms have been found for this gene. [provided by RefSeq, Jun 2009],

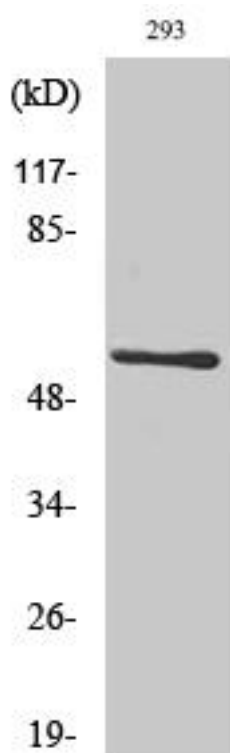
matters needing attention

Avoid repeated freezing and thawing!

Usage suggestions

This product can be used in immunological reaction related experiments. For more information, please consult technical personnel.

Products Images



Western Blot analysis of various cells using CLK1 Monoclonal Antibody