



# Casein Kinase Iε Monoclonal Antibody

Catalog No	BYmab-14702
Isotype	IgG
Reactivity	Human;Mouse
Applications	WB
Gene Name	CSNK1E
Protein Name	Casein kinase I isoform epsilon
Immunogen	The antiserum was produced against synthesized peptide derived from human CKI-epsilon. AA range:276-325
Specificity	Casein Kinase I ε Monoclonal Antibody detects endogenous levels of Casein Kinase I ε protein.
Formulation	Liquid in PBS containing 50% glycerol, 0.5% BSA and 0.02% sodium azide.
Source	Monoclonal, Mouse,IgG
Purification	The antibody was affinity-purified from mouse antiserum by affinity-chromatography using epitope-specific immunogen.
Dilution	WB 1:500-2000
Concentration	1 mg/ml
Purity	≥90%
Storage Stability	-20°C/1 year
Synonyms	CSNK1E; Casein kinase I isoform epsilon; CKI-epsilon; CKIε
Observed Band	47kD
Cell Pathway	Cytoplasm . Nucleus .
Tissue Specificity	Expressed in all tissues examined, including brain, heart, lung, liver, pancreas, kidney, placenta and skeletal muscle. Expressed in monocytes and lymphocytes but not in granulocytes.
Function	catalytic activity:ATP + a protein = ADP + a phosphoprotein.;function:Casein kinases are operationally defined by their preferential utilization of acidic proteins such as caseins as substrates. Can phosphorylate a large number of proteins. Participates in Wnt signaling. Phosphorylates DVL1. Central component of the circadian clock. May act as a negative regulator of circadian rhythmicity by phosphorylating PER1 and PER2. Retains PER1 in the cytoplasm. Inhibits cytokine-induced granulocytic differentiation.;induction:Down-regulated during granulocytic differentiation.;PTM:Autophosphorylated.;similarity:Belongs to the protein kinase superfamily.;similarity:Belongs to the protein kinase superfamily.

Nanjing BYabscience technology Co.,Ltd



CK1 Ser/Thr protein kinase family. Casein kinase I subfamily.,similarity:Contains 1 protein kinase domain.,subunit:Monomer. Component of the circadian core oscillator, which includes the CRY pro

## Background

casein kinase 1 epsilon(CSNK1E) Homo sapiens The protein encoded by this gene is a serine/threonine protein kinase and a member of the casein kinase I protein family, whose members have been implicated in the control of cytoplasmic and nuclear processes, including DNA replication and repair. The encoded protein is found in the cytoplasm as a monomer and can phosphorylate a variety of proteins, including itself. This protein has been shown to phosphorylate period, a circadian rhythm protein. Two transcript variants encoding the same protein have been found for this gene. [provided by RefSeq, Feb 2014],

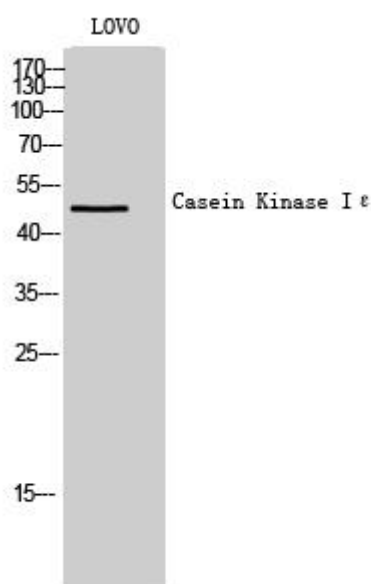
## matters needing attention

Avoid repeated freezing and thawing!

## Usage suggestions

This product can be used in immunological reaction related experiments. For more information, please consult technical personnel.

## Products Images



Western Blot analysis of various cells using Casein Kinase I  $\epsilon$  Monoclonal Antibody

**Nanjing BYabscience technology Co.,Ltd**

网址: [www.njbybio.com](http://www.njbybio.com)

官方热线: 025-5229-8998

监督电话: 15950492658