



Casein Kinase Iγ2 Monoclonal Antibody

Catalog No	BYmab-14700
Isotype	IgG
Reactivity	Human;Mouse;Rat
Applications	WB
Gene Name	CSNK1G2
Protein Name	Casein kinase I isoform gamma-2
Immunogen	The antiserum was produced against synthesized peptide derived from human CKI-gamma2. AA range:10-59
Specificity	Casein Kinase I γ 2 Monoclonal Antibody detects endogenous levels of Casein Kinase I γ 2 protein.
Formulation	Liquid in PBS containing 50% glycerol, 0.5% BSA and 0.02% sodium azide.
Source	Monoclonal, Mouse,IgG
Purification	The antibody was affinity-purified from mouse antiserum by affinity-chromatography using epitope-specific immunogen.
Dilution	WB 1:500-2000
Concentration	1 mg/ml
Purity	≥90%
Storage Stability	-20°C/1 year
Synonyms	CSNK1G2; CK1G2; Casein kinase I isoform gamma-2; CKI-gamma 2
Observed Band	47kD
Cell Pathway	Cytoplasm, cell cortex . Cytoplasm .
Tissue Specificity	Testis.
Function	catalytic activity:ATP + a protein = ADP + a phosphoprotein.,function:Casein kinases are operationally defined by their preferential utilization of acidic proteins such as caseins as substrates. It can phosphorylate a large number of proteins. Participates in Wnt signaling.,PTM:Autophosphorylated.,similarity:Belongs to the protein kinase superfamily. CK1 Ser/Thr protein kinase family. Casein kinase I subfamily.,similarity:Contains 1 protein kinase domain.,subunit:Monomer.,tissue specificity:Testis.,
Background	catalytic activity:ATP + a protein = ADP + a phosphoprotein.,function:Casein kinases are operationally defined by their preferential utilization of acidic proteins such as caseins as substrates. It can phosphorylate a large number of proteins.

Nanjing BYabscience technology Co.,Ltd



Participates in Wnt signaling.,PTM:Autophosphorylated.,similarity:Belongs to the protein kinase superfamily. CK1 Ser/Thr protein kinase family. Casein kinase I subfamily.,similarity:Contains 1 protein kinase domain.,subunit:Monomer.,tissue specificity:Testis.,

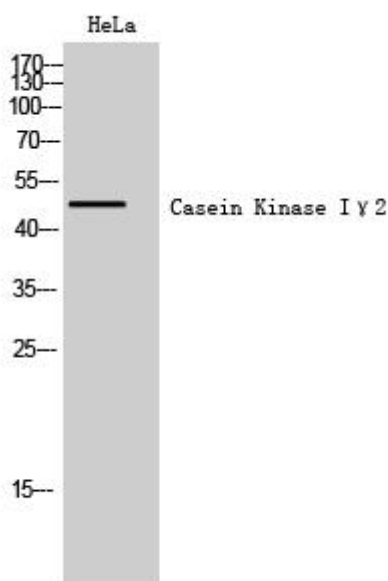
matters needing attention

Avoid repeated freezing and thawing!

Usage suggestions

This product can be used in immunological reaction related experiments. For more information, please consult technical personnel.

Products Images



Western Blot analysis of various cells using Casein Kinase I γ 2 Monoclonal Antibody