



CARKL Monoclonal Antibody

Catalog No	BYmab-14693
Isotype	IgG
Reactivity	Human;Mouse;Rat
Applications	WB
Gene Name	SHPK
Protein Name	Sedoheptulokinase
Immunogen	The antiserum was produced against synthesized peptide derived from human CARKL. AA range:31-80
Specificity	CARKL Monoclonal Antibody detects endogenous levels of CARKL protein.
Formulation	Liquid in PBS containing 50% glycerol, 0.5% BSA and 0.02% sodium azide.
Source	Monoclonal, Mouse,IgG
Purification	The antibody was affinity-purified from mouse antiserum by affinity-chromatography using epitope-specific immunogen.
Dilution	WB 1:500-2000
Concentration	1 mg/ml
Purity	≥90%
Storage Stability	-20°C/1 year
Synonyms	SHPK; CARKL; Sedoheptulokinase; SHK; Carbohydrate kinase-like protein
Observed Band	55kD
Cell Pathway	Cytoplasm .
Tissue Specificity	Strongly expressed in liver, kidney and pancreas. Expressed at lower levels in placenta and heart. Very weakly expressed in lung and brain.
Function	catalytic activity:ATP + sedoheptulose = ADP + sedoheptulose 7-phosphate.,disease:Deficiency of the SHPK gene in cystinosis patients with a common 57-Kb deletion causes urinary accumulation of sedoheptulose and erythritol.,similarity:Belongs to the FGGY kinase family.,tissue specificity:Strongly expressed in liver, kidney and pancreas. Expressed at lower levels in placenta and heart. Very weakly expressed in lung and brain.,
Background	sedoheptulokinase(SHPK) Homo sapiens The protein encoded by this gene has weak homology to several carbohydrate kinases, a class of proteins involved in the phosphorylation of sugars as they enter a cell, inhibiting return across the cell membrane. Sequence variation between this novel gene and known

Nanjing BYabscience technology Co.,Ltd



carbohydrate kinases suggests the possibility of a different substrate, cofactor or changes in kinetic properties distinguishing it from other carbohydrate kinases. The gene resides in a region commonly deleted in cystinosis patients, suggesting a role as a modifier for the cystinosis phenotype. The genomic region is also rich in Alu repetitive sequences, frequently involved in chromosomal rearrangements. [provided by RefSeq, Jul 2008],

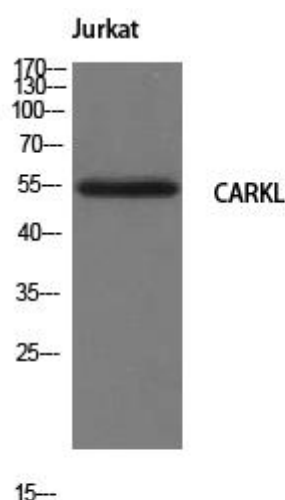
matters needing attention

Avoid repeated freezing and thawing!

Usage suggestions

This product can be used in immunological reaction related experiments. For more information, please consult technical personnel.

Products Images



Western Blot analysis of various cells using CARKL Monoclonal Antibody