



## Axl (phospho-Tyr702) mouse mAb

|                           |   |
|---------------------------|---|
| <b>Catalog No</b>         | BYmab-14586   |
| <b>Isotype</b>            | IgG   |
| <b>Reactivity</b>         | Human;Rat;Mouse;  |
| <b>Applications</b>       | WB  |
| <b>Gene Name</b>          | AXL UFO   |
| <b>Protein Name</b>       | Axl (Tyr702)  |
| <b>Immunogen</b>          | Synthesized phosho peptide around human Axl (Tyr702)  |
| <b>Specificity</b>        | This antibody detects endogenous levels of Human Axl (phospho-Tyr702)   |
| <b>Formulation</b>        | Liquid in PBS containing 50% glycerol, 0.5% BSA and 0.02% sodium azide.   |
| <b>Source</b>             | Monoclonal, Mouse,IgG   |
| <b>Purification</b>       | The antibody was affinity-purified from mouse antiserum by affinity-chromatography using epitope-specific immunogen.  |
| <b>Dilution</b>           | WB 1:500-2000   |
| <b>Concentration</b>      | 1 mg/ml   |
| <b>Purity</b>             | ≥90%  |
| <b>Storage Stability</b>  | -20°C/1 year  |
| <b>Synonyms</b>           | AXL; UFO; Tyrosine-protein kinase receptor UFO; AXL oncogene  |
| <b>Observed Band</b>      | 130kD   |
| <b>Cell Pathway</b>       | Cell membrane ; Single-pass type I membrane protein .   |
| <b>Tissue Specificity</b> | Highly expressed in metastatic colon tumors. Expressed in primary colon tumors. Weakly expressed in normal colon tissue.  |
| <b>Function</b>           | catalytic activity:ATP + a protein = ADP + a phosphoprotein.,caution:Although authors have considered STK6 and STK15 as two different proteins, it is clear that they are the same protein.,disease:Defects in AURKA are responsible for numerical centrosome aberrations including aneuploidy.,function:May play a role in cell cycle regulation during anaphase and/or telophase, in relation to the function of the centrosome/spindle pole region during chromosome segregation. May be involved in microtubule formation and/or stabilization. Phosphorylates ARHGEF2 and BORA.,PTM:Phosphorylated upon DNA damage, probably by ATM or ATR.,similarity:Belongs to the protein kinase superfamily.,similarity:Belongs to the protein kinase superfamily. Ser/Thr protein kinase family. Aurora subfamily.,similarity:Contains 1 protein kinase domain.,subcellular location:Localizes on centrosomes in interphase cells and at |

**Nanjing BYabscience technology Co.,Ltd**



## Background

The protein encoded by this gene is a cell cycle-regulated kinase that appears to be involved in microtubule formation and/or stabilization at the spindle pole during chromosome segregation. The encoded protein is found at the centrosome in interphase cells and at the spindle poles in mitosis. This gene may play a role in tumor development and progression. A processed pseudogene of this gene has been found on chromosome 1, and an unprocessed pseudogene has been found on chromosome 10. Multiple transcript variants encoding the same protein have been found for this gene. [provided by RefSeq, Jul 2008],

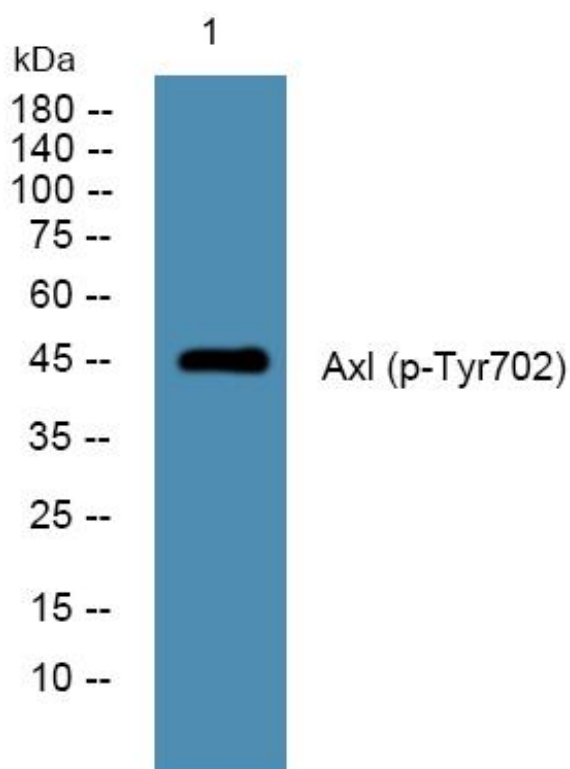
## matters needing attention

Avoid repeated freezing and thawing!

## Usage suggestions

This product can be used in immunological reaction related experiments. For more information, please consult technical personnel.

## Products Images



Western Blot analysis of various cells using Axl (phospho-Tyr702) mouse mAb