



MLK3 (phospho Ser674) Monoclonal Antibody

Catalog No	BYmab-14579
Isotype	IgG
Reactivity	Human;Mouse;Rat
Applications	WB
Gene Name	MAP3K11
Protein Name	Mitogen-activated protein kinase kinase kinase 11
Immunogen	Synthesized phospho-peptide around the phosphorylation site of human MLK3 (phospho Ser674)
Specificity	Phospho-MLK3 (S674) Monoclonal Antibody detects endogenous levels of MLK3 protein only when phosphorylated at S674.
Formulation	Liquid in PBS containing 50% glycerol, 0.5% BSA and 0.02% sodium azide.
Source	Monoclonal, Mouse,IgG
Purification	The antibody was affinity-purified from mouse antiserum by affinity-chromatography using epitope-specific immunogen.
Dilution	WB 1:500-2000
Concentration	1 mg/ml
Purity	≥90%
Storage Stability	-20°C/1 year
Synonyms	MAP3K11; MLK3; PTK1; SPRK; Mitogen-activated protein kinase kinase kinase 11; Mixed lineage kinase 3; Src-homology 3 domain-containing proline-rich kinase
Observed Band	
Cell Pathway	Cytoplasm, cytoskeleton, microtubule organizing center, centrosome . Location is cell cycle dependent.
Tissue Specificity	Expressed in a wide variety of normal and neoplastic tissues including fetal lung, liver, heart and kidney, and adult lung, liver, heart, kidney, placenta, skeletal muscle, pancreas and brain.
Function	catalytic activity:ATP + a protein = ADP + a phosphoprotein.,cofactor:Magnesium.,enzyme regulation:Homodimerization via the leucine zipper domains is required for autophosphorylation and subsequent activation.,function:Activates the JUN N-terminal pathway. Required for serum-stimulated cell proliferation and for mitogen and cytokine activation of MAPK14 (p38), MAPK3 (ERK) and MAPK8 (JNK1). Plays a role in mitogen-stimulated phosphorylation and activation of BRAF, but does not phosphorylate BRAF directly. Influences microtubule organization during the cell cycle.,PTM:Autophosphorylation on serine and threonine residues within the

Nanjing BYabscience technology Co.,Ltd



activation loop plays a role in enzyme activation. Thr-277 is likely to be the main autophosphorylation site. Phosphorylation of Ser-555 and Ser-556 is induced by CDC42.,similarity:Belongs to the protein kinase superfamily. STE Ser/Thr protein kinase family. MAP

Background

The protein encoded by this gene is a member of the serine/threonine kinase family. This kinase contains a SH3 domain and a leucine zipper-basic motif. This kinase preferentially activates MAPK8/JNK kinase, and functions as a positive regulator of JNK signaling pathway. This kinase can directly phosphorylate, and activates IkapMAB kinase alpha and beta, and is found to be involved in the transcription activity of NF-kapMAB mediated by Rho family GTPases and CDC42. [provided by RefSeq, Jul 2008],

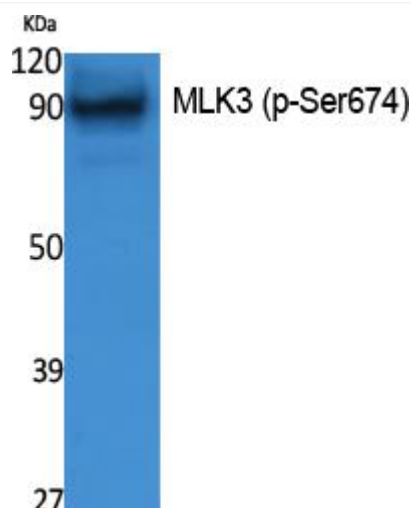
matters needing attention

Avoid repeated freezing and thawing!

Usage suggestions

This product can be used in immunological reaction related experiments. For more information, please consult technical personnel.

Products Images



Western Blot analysis of various cells using MLK3 (phospho Ser674) Monoclonal Antibody