



# Syk (phospho Tyr323) Monoclonal Antibody

<b>Catalog No</b>	BYmab-14517
<b>Isotype</b>	IgG
<b>Reactivity</b>	Human;Mouse;Rat
<b>Applications</b>	WB
<b>Gene Name</b>	SYK
<b>Protein Name</b>	Tyrosine-protein kinase SYK
<b>Immunogen</b>	The antiserum was produced against synthesized peptide derived from human SYK around the phosphorylation site of Tyr323. AA range:289-338
<b>Specificity</b>	Phospho-Syk (Y323) Monoclonal Antibody detects endogenous levels of Syk protein only when phosphorylated at Y323.
<b>Formulation</b>	Liquid in PBS containing 50% glycerol, 0.5% BSA and 0.02% sodium azide.
<b>Source</b>	Monoclonal, Mouse,IgG
<b>Purification</b>	The antibody was affinity-purified from mouse antiserum by affinity-chromatography using epitope-specific immunogen.
<b>Dilution</b>	WB 1:500-2000
<b>Concentration</b>	1 mg/ml
<b>Purity</b>	≥90%
<b>Storage Stability</b>	-20°C/1 year
<b>Synonyms</b>	SYK; Tyrosine-protein kinase SYK; Spleen tyrosine kinase; p72-Syk
<b>Observed Band</b>	80kD
<b>Cell Pathway</b>	Cell membrane . Cytoplasm, cytosol .
<b>Tissue Specificity</b>	Widely expressed in hematopoietic cells (at protein level) (PubMed:8163536). Expressed in neutrophils (at protein level) (PubMed:15123770). Within the B-cell compartment, expressed from pro- and pre-B cells to plasma cells (PubMed:8163536).
<b>Function</b>	catalytic activity:ATP + a [protein]-L-tyrosine = ADP + a [protein]-L-tyrosine phosphate.,function:Positive effector of BCR-stimulated responses. Couples the B-cell antigen receptor (BCR) to the mobilization of calcium ion either through a phosphoinositide 3-kinase-dependent pathway, when not phosphorylated on tyrosines of the linker region, or through a phospholipase C-gamma-dependent pathway, when phosphorylated on Tyr-348 and Tyr-352. Thus the differential phosphorylation of Syk can determine the pathway by which BCR is coupled to the regulation of intracellular calcium ion.,PTM:Autophosphorylated.,PTM:Phosphorylation on Tyr-323 creates a

**Nanjing BYabscience technology Co.,Ltd**



binding site for c-Cbl, an adapter protein that serves as a negative regulator of BCR-stimulated calcium ion signaling.,PTM:Phosphorylation on Tyr-348 and Tyr-352 enhances the phosphorylation and activation of phospholipase C-gamma and the early phas

#### Background

This gene encodes a member of the family of non-receptor type Tyr protein kinases. This protein is widely expressed in hematopoietic cells and is involved in coupling activated immunoreceptors to downstream signaling events that mediate diverse cellular responses, including proliferation, differentiation, and phagocytosis. It is thought to be a modulator of epithelial cell growth and a potential tumour suppressor in human breast carcinomas. Alternatively spliced transcript variants encoding different isoforms have been found for this gene. [provided by RefSeq, Mar 2010],

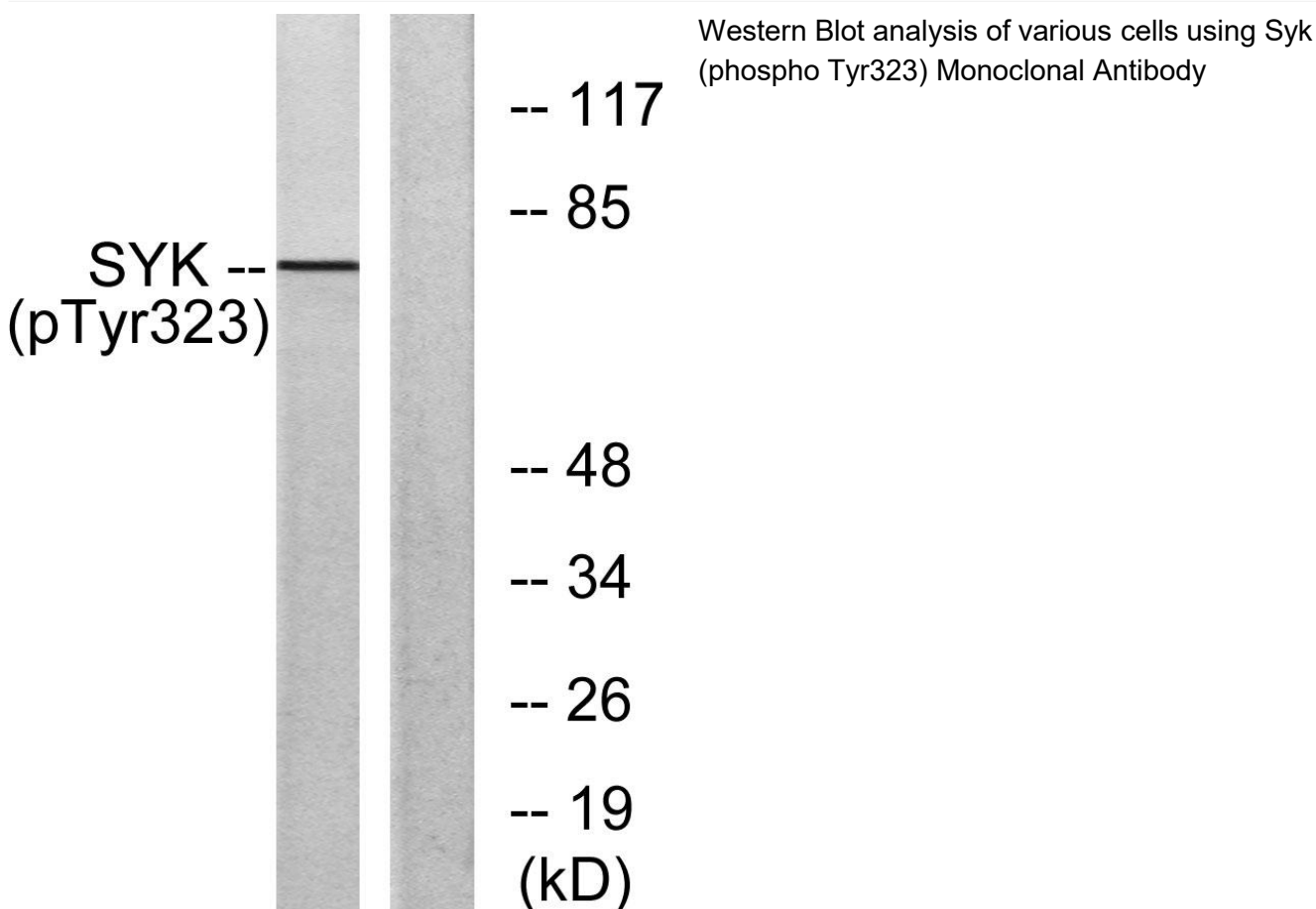
#### matters needing attention

Avoid repeated freezing and thawing!

#### Usage suggestions

This product can be used in immunological reaction related experiments. For more information, please consult technical personnel.

### Products Images



Nanjing BYabs science technology Co.,Ltd