



# MEK Kinase-1 (phospho Thr1402) Monoclonal Antibody

<b>Catalog No</b>	BYmab-14492
<b>Isotype</b>	IgG
<b>Reactivity</b>	Human;Mouse;Rat
<b>Applications</b>	WB
<b>Gene Name</b>	MAP3K1
<b>Protein Name</b>	Mitogen-activated protein kinase kinase kinase 1
<b>Immunogen</b>	The antiserum was produced against synthesized peptide derived from human MAP3K1 around the phosphorylation site of Thr1402. AA range:1368-1417
<b>Specificity</b>	Phospho-MEK Kinase-1 (T1402) Monoclonal Antibody detects endogenous levels of MEK Kinase-1 protein only when phosphorylated at T1402.
<b>Formulation</b>	Liquid in PBS containing 50% glycerol, 0.5% BSA and 0.02% sodium azide.
<b>Source</b>	Monoclonal, Mouse,IgG
<b>Purification</b>	The antibody was affinity-purified from mouse antiserum by affinity-chromatography using epitope-specific immunogen.
<b>Dilution</b>	WB 1:500-2000
<b>Concentration</b>	1 mg/ml
<b>Purity</b>	≥90%
<b>Storage Stability</b>	-20°C/1 year
<b>Synonyms</b>	MAP3K1; MAPKKK1; MEKK; MEKK1; Mitogen-activated protein kinase kinase kinase 1; MAPK/ERK kinase kinase 1; MEK kinase 1; MEKK 1
<b>Observed Band</b>	160kD
<b>Cell Pathway</b>	cytoplasm,cytosol,
<b>Tissue Specificity</b>	Leukocyte,
<b>Function</b>	catalytic activity:ATP + a protein = ADP + a phosphoprotein.,cofactor:Magnesium.,enzyme regulation:Activated by autophosphorylation on Thr-1400 and Thr-1412 following oligomerization.,function:Component of a protein kinase signal transduction cascade. Activates the ERK and JNK kinase pathways by phosphorylation of MAP2K1 and MAP2K4. Activates CHUK and IKBKB, the central protein kinases of the NF-kappa-B pathway.,PTM:Autophosphorylated.,similarity:Belongs to the protein kinase superfamily. STE Ser/Thr protein kinase family. MAP kinase kinase

**Nanjing BYabscience technology Co.,Ltd**



kinase subfamily.,similarity:Contains 1 protein kinase domain.,similarity:Contains 1 RING-type zinc finger.,similarity:Contains 1 SWIM-type zinc finger.,subunit:Binds both upstream activators and downstream substrates in multimolecular complexes through its N-terminus. Oligomerizes after binding MAP4K2 or TRAF2. Interacts with AXIN1.,

## Background

The protein encoded by this gene is a serine/threonine kinase and is part of some signal transduction cascades, including the ERK and JNK kinase pathways as well as the NF-kappa-B pathway. The encoded protein is activated by autophosphorylation and requires magnesium as a cofactor in phosphorylating other proteins. This protein has E3 ligase activity conferred by a plant homeodomain (PHD) in its N-terminus and phospho-kinase activity conferred by a kinase domain in its C-terminus. [provided by RefSeq, Mar 2012],

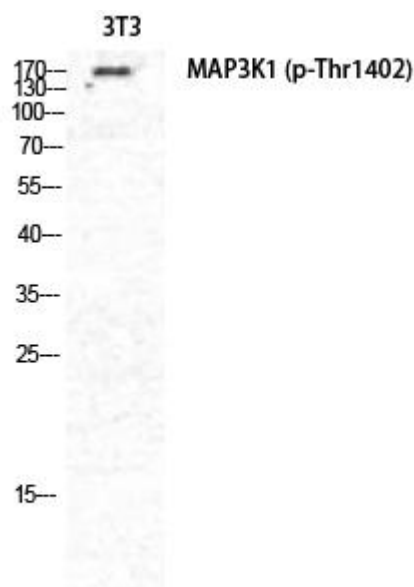
## matters needing attention

Avoid repeated freezing and thawing!

## Usage suggestions

This product can be used in immunological reaction related experiments. For more information, please consult technical personnel.

## Products Images



Western Blot analysis of various cells using MEK Kinase-1 (phospho Thr1402) Monoclonal Antibody