



Casein Kinase I α (phospho Tyr294) Monoclonal Antibody

Catalog No	BYmab-14489
Isotype	IgG
Reactivity	Human;Mouse;Rat
Applications	WB
Gene Name	CSNK1A1
Protein Name	Casein kinase I isoform alpha
Immunogen	The antiserum was produced against synthesized peptide derived from human CK-1 alpha around the phosphorylation site of Tyr294. AA range:260-309
Specificity	Phospho-Casein Kinase I α (Y294) Monoclonal Antibody detects endogenous levels of Casein Kinase I α protein only when phosphorylated at Y294.
Formulation	Liquid in PBS containing 50% glycerol, 0.5% BSA and 0.02% sodium azide.
Source	Monoclonal, Mouse,IgG
Purification	The antibody was affinity-purified from mouse antiserum by affinity-chromatography using epitope-specific immunogen.
Dilution	WB 1:500-2000
Concentration	1 mg/ml
Purity	≥90%
Storage Stability	-20°C/1 year
Synonyms	CSNK1A1; Casein kinase I isoform alpha; CKI-alpha; CK1; CSNK1A1L; Casein kinase I isoform alpha-like; CKI-alpha-like; CK1
Observed Band	37kD
Cell Pathway	Cytoplasm . Cytoplasm, cytoskeleton, microtubule organizing center, centrosome . Chromosome, centromere, kinetochore . Nucleus speckle . Cytoplasm, cytoskeleton, cilium basal body . Cytoplasm, cytoskeleton, spindle . Localizes to the centrosome in interphase cells, and to kinetochore fibers during mitosis. Also recruited to the keratin cytoskeleton (PubMed:23902688). .
Tissue Specificity	Brain,Epithelium,Liver,Lung,Placenta,Skin,
Function	catalytic activity:ATP + a protein = ADP + a phosphoprotein.,function:Casein kinases are operationally defined by their preferential utilization of acidic proteins such as caseins as substrates. It can phosphorylate a large number of proteins. Participates in Wnt signaling. Phosphorylates CTNNB1 on 'Ser-45',similarity:Belongs to the protein kinase superfamily.,similarity:Belongs to

Nanjing BYabscience technology Co.,Ltd



the protein kinase superfamily. CK1 Ser/Thr protein kinase family. Casein kinase I subfamily.,similarity:Contains 1 protein kinase domain.,subunit:Monomer. Interacts with the Axin complex.,

Background

CSNK1A1 (Casein Kinase 1 Alpha 1) is a Protein Coding gene. Among its related pathways are Signaling by GPCR and Infectious disease. GO annotations related to this gene include transferase activity, transferring phosphorus-containing groups and protein tyrosine kinase activity. An important paralog of this gene is CSNK1G2. Casein kinases are operationally defined by their preferential utilization of acidic proteins such as caseins as substrates. It can phosphorylate a large number of proteins. Participates in Wnt signaling. Phosphorylates CTNNB1 at Ser-45. May phosphorylate PER1 and PER2. May play a role in segregating chromosomes during mitosis (PubMed: 11955436, PubMed: 1409656, PubMed: 18305108). May play a role in keratin cytoskeleton disassembly and thereby, it may regulate epithelial cell migration (PubMed: 23902688). Casein kinase I (CK1) is a monomeric serine-threonine protein kinase with 7 isoforms: alpha, beta, gamma1, gamma2, gamma3, delta and epsilon. CK1 is involved in many cellular processes including DNA repair, cell division, nuclear localization and membrane transport. Isoforms are also integral to development.

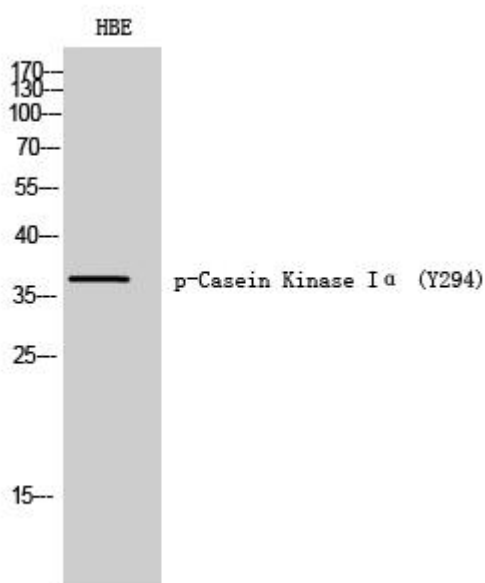
matters needing attention

Avoid repeated freezing and thawing!

Usage suggestions

This product can be used in immunological reaction related experiments. For more information, please consult technical personnel.

Products Images



Western Blot analysis of various cells using Casein Kinase I α (phospho Tyr294) Monoclonal Antibody

Nanjing BYabscience technology Co.,Ltd

网址: www.njbybio.com

官方热线: 025-5229-8998

监督电话: 15950492658