



Casein Kinase II β (phospho Ser209) Monoclonal Antibody

Catalog No	BYmab-14477
Isotype	IgG
Reactivity	Human;Mouse;Rat
Applications	WB
Gene Name	CSNK2B
Protein Name	Casein kinase II subunit beta
Immunogen	The antiserum was produced against synthesized peptide derived from human CKII-beta around the phosphorylation site of Ser209. AA range:166-215
Specificity	Phospho-Casein Kinase II β (S209) Monoclonal Antibody detects endogenous levels of Casein Kinase II β protein only when phosphorylated at S209.
Formulation	Liquid in PBS containing 50% glycerol, 0.5% BSA and 0.02% sodium azide.
Source	Monoclonal, Mouse,IgG
Purification	The antibody was affinity-purified from mouse antiserum by affinity-chromatography using epitope-specific immunogen.
Dilution	WB 1:500-2000
Concentration	1 mg/ml
Purity	$\geq 90\%$
Storage Stability	-20°C/1 year
Synonyms	CSNK2B; CK2N; G5A; Casein kinase II subunit beta; CK II beta; Phosvitin; Protein G5a
Observed Band	25kD
Cell Pathway	nucleus,nucleoplasm,cytoplasm,cytosol,plasma membrane,protein kinase CK2 complex,PcG protein complex,extracellular exosome,
Tissue Specificity	Brain,Epithelium,
Function	function:Participates in Wnt signaling (By similarity). Plays a complex role in regulating the basal catalytic activity of the alpha subunit.,PTM:N-glycosylated.,PTM:Phosphorylated by alpha subunit.,similarity:Belongs to the casein kinase 2 subunit beta family.,similarity:Contains 1 UPAR/Ly6 domain.,subunit:Forms oligomer.,subunit:Tetramer composed of an alpha subunit, an alpha' subunit and two beta subunits. Interacts with TCTEX1D3 (By similarity). Interacts with CD163. Also component of a CK2-SPT16-SSRP1 complex composed of SSRP1,

Nanjing BYabscience technology Co.,Ltd



SUPT16H, CSNK2A1, CSNK2A2 and CSNK2B, the complex associating following UV irradiation.,

Background

This gene encodes the beta subunit of casein kinase II, a ubiquitous protein kinase which regulates metabolic pathways, signal transduction, transcription, translation, and replication. The enzyme is composed of three subunits, alpha, alpha prime and beta, which form a tetrameric holoenzyme. The alpha and alpha prime subunits are catalytic, while the beta subunit serves regulatory functions. The enzyme localizes to the endoplasmic reticulum and the Golgi apparatus. Two transcript variants encoding different isoforms have been found for this gene. [provided by RefSeq, Sep 2013],

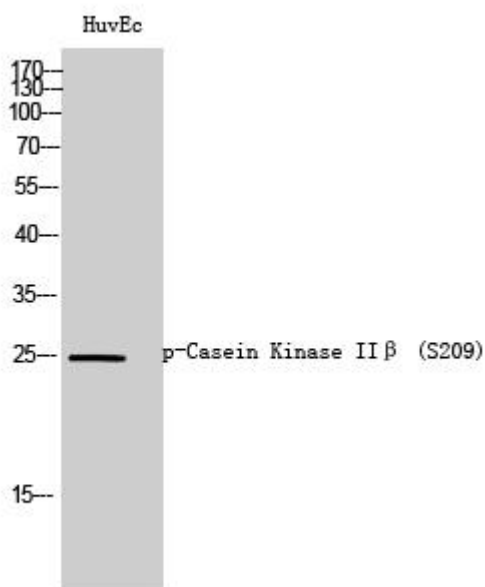
matters needing attention

Avoid repeated freezing and thawing!

Usage suggestions

This product can be used in immunological reaction related experiments. For more information, please consult technical personnel.

Products Images



Western Blot analysis of various cells using Casein Kinase II β (phospho Ser209) Monoclonal Antibody