



# Krs-1/2 (phospho Thr183) Monoclonal Antibody

<b>Catalog No</b>	BYmab-14462
<b>Isotype</b>	IgG
<b>Reactivity</b>	Human;Mouse
<b>Applications</b>	WB
<b>Gene Name</b>	STK3/STK4
<b>Protein Name</b>	Serine/threonine-protein kinase 3/4
<b>Immunogen</b>	The antiserum was produced against synthesized peptide derived from human Mst1/2 around the phosphorylation site of Thr183. AA range:149-198
<b>Specificity</b>	Phospho-Krs-1/2 (T183) Monoclonal Antibody detects endogenous levels of Krs-1/2 protein only when phosphorylated at T183.
<b>Formulation</b>	Liquid in PBS containing 50% glycerol, 0.5% BSA and 0.02% sodium azide.
<b>Source</b>	Monoclonal, Mouse,IgG
<b>Purification</b>	The antibody was affinity-purified from mouse antiserum by affinity-chromatography using epitope-specific immunogen.
<b>Dilution</b>	WB 1:500-2000
<b>Concentration</b>	1 mg/ml
<b>Purity</b>	≥90%
<b>Storage Stability</b>	-20°C/1 year
<b>Synonyms</b>	STK3; KRS1; MST2; Serine/threonine-protein kinase 3; Mammalian STE20-like protein kinase 2; MST-2; STE20-like kinase MST2; Serine/threonine-protein kinase Krs-1; STK4; KRS2; MST1; Serine/threonine-protein kinase 4; Mammalian STE20-like prot
<b>Observed Band</b>	60kD
<b>Cell Pathway</b>	Cytoplasm . Nucleus . The caspase-cleaved form cycles between nucleus and cytoplasm (PubMed:19525978, PubMed:11278283). Phosphorylation at Thr-117 leads to inhibition of nuclear translocation (PubMed:19525978). .
<b>Tissue Specificity</b>	Expressed at high levels in adult kidney, skeletal and placenta tissues and at very low levels in adult heart, lung and brain tissues.
<b>Function</b>	catalytic activity:ATP + a protein = ADP + a phosphoprotein.,cofactor:Magnesium.,enzyme regulation:Inhibited by the C-terminal non-catalytic region. Activated by caspase-cleavage. Full activation also requires homodimerization and autophosphorylation of Thr-180, which are inhibited by the proto-oncogene product RAF1.,function:Stress-activated, pro-apoptotic kinase which, following caspase-cleavage, enters the nucleus and

**Nanjing BYabscience technology Co.,Ltd**



induces chromatin condensation followed by internucleosomal DNA fragmentation. Phosphorylates NKX2-1 (By similarity). Phosphorylates and activates LATS1 and LATS2.,similarity:Belongs to the protein kinase superfamily. STE Ser/Thr protein kinase family. STE20 subfamily.,similarity:Contains 1 protein kinase domain.,similarity:Contains 1 SARAH domain.,subcellular location:The caspase-cleaved form cycles between nucleus and cytoplasm.,subunit:Homodimer; mediated via the coil

## Background

serine/threonine kinase 3(STK3) Homo sapiens This gene encodes a serine/threonine protein kinase activated by proapoptotic molecules indicating the encoded protein functions as a growth suppressor. Cleavage of the protein product by caspase removes the inhibitory C-terminal portion. The N-terminal portion is transported to the nucleus where it homodimerizes to form the active kinase which promotes the condensation of chromatin during apoptosis. Multiple transcript variants encoding different isoforms have been found for this gene. [provided by RefSeq, Jan 2012],

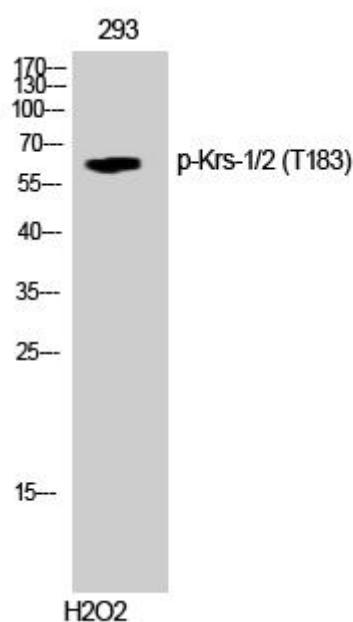
## matters needing attention

Avoid repeated freezing and thawing!

## Usage suggestions

This product can be used in immunological reaction related experiments. For more information, please consult technical personnel.

## Products Images



Western Blot analysis of various cells using Krs-1/2 (phospho Thr183) Monoclonal Antibody

Nanjing BYabs science technology Co.,Ltd