



p70 S6 kinase α (phospho Ser371) Monoclonal Antibody

Catalog No	BYmab-14450
Isotype	IgG
Reactivity	Human;Mouse;Rat
Applications	WB
Gene Name	RPS6KB1 STK14A P70S6K
Protein Name	Ribosomal protein S6 kinase beta-1
Immunogen	The antiserum was produced against synthesized peptide derived from human p70 S6 Kinase around the phosphorylation site of Ser371. AA range:337-386
Specificity	Phospho-p70 S6 kinase α (S371) Monoclonal Antibody detects endogenous levels of p70 S6 kinase α protein only when phosphorylated at S371.
Formulation	Liquid in PBS containing 50% glycerol, 0.5% BSA and 0.02% sodium azide.
Source	Monoclonal, Mouse,IgG
Purification	The antibody was affinity-purified from mouse antiserum by affinity-chromatography using epitope-specific immunogen.
Dilution	WB 1:500-2000
Concentration	1 mg/ml
Purity	$\geq 90\%$
Storage Stability	-20°C/1 year
Synonyms	RPS6KB1; STK14A; Ribosomal protein S6 kinase beta-1; S6K-beta-1; S6K1; 70 kDa ribosomal protein S6 kinase 1; P70S6K1; p70-S6K 1; Ribosomal protein S6 kinase I; Serine/threonine-protein kinase 14A; p70 ribosomal S6 kinase alpha; p70 S6 kinas
Observed Band	60kD
Cell Pathway	Cell junction, synapse, synaptosome . Mitochondrion outer membrane. Mitochondrion. Colocalizes with UR11 at mitochondrion.; [Isoform Alpha I]: Nucleus. Cytoplasm.; [Isoform Alpha II]: Cytoplasm.
Tissue Specificity	Widely expressed.
Function	catalytic activity:ATP + a protein = ADP + a phosphoprotein.;enzyme regulation:Activation by serine/threonine phosphorylation and protein kinase C, inactivated by type 2A phosphatase.;function:Phosphorylates specifically ribosomal protein S6 in response to insulin or several classes of

Nanjing BYabscience technology Co.,Ltd



mitogens.,similarity:Belongs to the protein kinase superfamily.,similarity:Belongs to the protein kinase superfamily. AGC Ser/Thr protein kinase family. S6 kinase subfamily.,similarity:Contains 1 AGC-kinase C-terminal domain.,similarity:Contains 1 protein kinase domain.,subunit:Interacts with PPP1R9A/neurabin-1.,tissue specificity:Widely expressed.,

Background

ribosomal protein S6 kinase B1(RPS6KB1) Homo sapiens This gene encodes a member of the ribosomal S6 kinase family of serine/threonine kinases. The encoded protein responds to mTOR (mammalian target of rapamycin) signaling to promote protein synthesis, cell growth, and cell proliferation. Activity of this gene has been associated with human cancer. Alternatively spliced transcript variants have been observed. The use of alternative translation start sites results in isoforms with longer or shorter N-termini which may differ in their subcellular localizations. There are two pseudogenes for this gene on chromosome 17. [provided by RefSeq, Jan 2013],

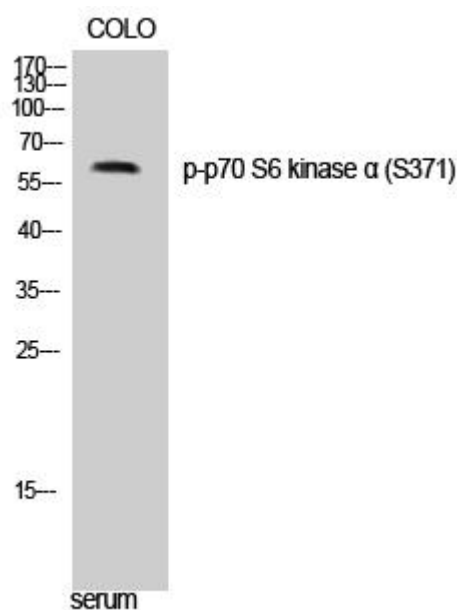
matters needing attention

Avoid repeated freezing and thawing!

Usage suggestions

This product can be used in immunological reaction related experiments. For more information, please consult technical personnel.

Products Images



Western Blot analysis of various cells using p70 S6 kinase α (phospho Ser371) Monoclonal Antibody

Nanjing BYabs science technology Co.,Ltd