



# GRK 2 (phospho Ser685) Monoclonal Antibody

<b>Catalog No</b>	BYmab-14406
<b>Isotype</b>	IgG
<b>Reactivity</b>	Human;Mouse;Rat
<b>Applications</b>	WB
<b>Gene Name</b>	ADRBK1
<b>Protein Name</b>	Beta-adrenergic receptor kinase 1
<b>Immunogen</b>	The antiserum was produced against synthesized peptide derived from human GRK2 around the phosphorylation site of Ser685. AA range:640-689
<b>Specificity</b>	Phospho-GRK 2 (S685) Monoclonal Antibody detects endogenous levels of GRK 2 protein only when phosphorylated at S685.
<b>Formulation</b>	Liquid in PBS containing 50% glycerol, 0.5% BSA and 0.02% sodium azide.
<b>Source</b>	Monoclonal, Mouse,IgG
<b>Purification</b>	The antibody was affinity-purified from mouse antiserum by affinity-chromatography using epitope-specific immunogen.
<b>Dilution</b>	WB 1:500-2000
<b>Concentration</b>	1 mg/ml
<b>Purity</b>	≥90%
<b>Storage Stability</b>	-20°C/1 year
<b>Synonyms</b>	ADRBK1; BARK; BARK1; GRK2; Beta-adrenergic receptor kinase 1; Beta-ARK-1; G-protein coupled receptor kinase 2
<b>Observed Band</b>	80kD
<b>Cell Pathway</b>	Cytoplasm . Cell membrane . Cell junction, synapse, postsynapse . Cell junction, synapse, presynapse .
<b>Tissue Specificity</b>	Expressed in peripheral blood leukocytes.
<b>Function</b>	catalytic activity:ATP + [beta-adrenergic receptor] = ADP + [beta-adrenergic receptor] phosphate.,catalytic activity:ATP + a protein = ADP + a phosphoprotein.,function:Specifically phosphorylates the agonist-occupied form of the beta-adrenergic and closely related receptors, probably inducing a desensitization of them.,online information:Beta adrenergic receptor kinase entry,similarity:Belongs to the protein kinase superfamily. AGC Ser/Thr protein kinase family. GPRK subfamily.,similarity:Contains 1 AGC-kinase C-terminal domain.,similarity:Contains 1 PH domain.,similarity:Contains 1 protein kinase domain.,similarity:Contains 1 RGS domain.,subunit:Interacts with GIT1 (By similarity). Interacts with, and phosphorylates chemokine-stimulated CCR5.,tissue

**Nanjing BYabscience technology Co.,Ltd**



specificity: Expressed in peripheral blood leukocytes.,

## Background

The product of this gene phosphorylates the beta-2-adrenergic receptor and appears to mediate agonist-specific desensitization observed at high agonist concentrations. This protein is an ubiquitous cytosolic enzyme that specifically phosphorylates the activated form of the beta-adrenergic and related G-protein-coupled receptors. Abnormal coupling of beta-adrenergic receptor to G protein is involved in the pathogenesis of the failing heart. [provided by RefSeq, Jul 2008],

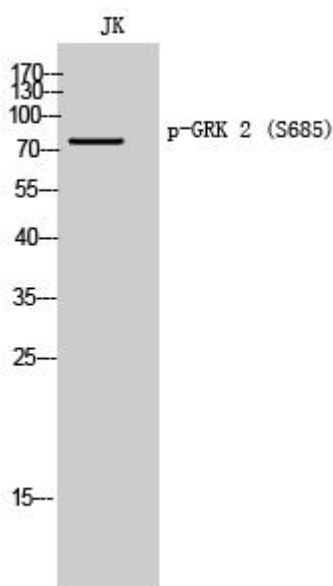
## matters needing attention

Avoid repeated freezing and thawing!

## Usage suggestions

This product can be used in immunological reaction related experiments. For more information, please consult technical personnel.

## Products Images



Western Blot analysis of various cells using GRK 2 (phospho Ser685) Monoclonal Antibody

Nanjing BYabs science technology Co.,Ltd

网址: [www.njbybio.com](http://www.njbybio.com)

官方热线: 025-5229-8998

监督电话: 15950492658