



Pragmin (phospho Tyr413) Monoclonal Antibody

| | |
|----------------------------------|--|
| Catalog No | BYmab-14347 |
| Isotype | IgG |
| Reactivity | Human;Mouse;Rat |
| Applications | WB |
| Gene Name | SGK223 |
| Protein Name | Tyrosine-protein kinase SgK223 |
| Immunogen | Synthesized phospho-peptide around the phosphorylation site of human Pragmin (phospho Tyr413) |
| Specificity | Phospho-Pragmin (Y413) Monoclonal Antibody detects endogenous levels of Pragmin protein only when phosphorylated at Y413. |
| Formulation | Liquid in PBS containing 50% glycerol, 0.5% BSA and 0.02% sodium azide. |
| Source | Monoclonal, Mouse,IgG |
| Purification | The antibody was affinity-purified from mouse antiserum by affinity-chromatography using epitope-specific immunogen. |
| Dilution | WB 1:500-2000 |
| Concentration | 1 mg/ml |
| Purity | ≥90% |
| Storage Stability | -20°C/1 year |
| Synonyms | SGK223; Tyrosine-protein kinase SgK223; Sugen kinase 223 |
| Observed Band | 175kD |
| Cell Pathway | Cytoplasm . Cell junction, focal adhesion . Nucleus . Colocalized with NOTCH1 in the nucleus. . |
| Tissue Specificity | Amygdala,Epithelium,Fetal brain,Spleen, |
| Function | catalytic activity:ATP + a [protein]-L-tyrosine = ADP + a [protein]-L-tyrosine phosphate.,similarity:Belongs to the protein kinase superfamily.,similarity:Contains 1 protein kinase domain., |
| Background | This gene encodes an enzyme that belongs to the tyrosine protein kinase family. A similar protein in rat binds to Rho family GTPase 2 (Rnd2) and regulates neurite outgrowth via activation of Ras homolog gene family, member A (RhoA). [provided by RefSeq, Mar 2014], |
| matters needing attention | Avoid repeated freezing and thawing! |

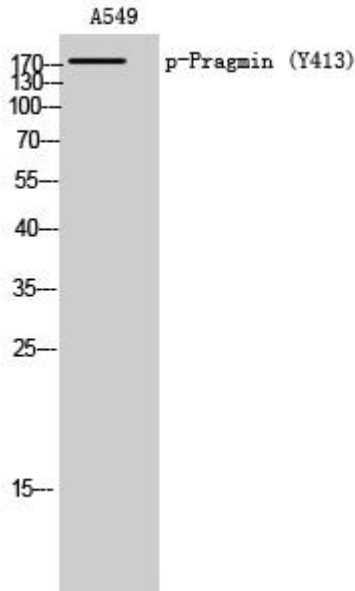
Nanjing BYabscience technology Co.,Ltd



Usage suggestions

This product can be used in immunological reaction related experiments. For more information, please consult technical personnel.

Products Images



Western Blot analysis of various cells using Pragmin (phospho Tyr413) Monoclonal Antibody