



# DC-LAMP Monoclonal Antibody

<b>Catalog No</b>	BYmab-14101
<b>Isotype</b>	IgG
<b>Reactivity</b>	Human;Rat;Mouse;
<b>Applications</b>	WB
<b>Gene Name</b>	LAMP3 DCLAMP TSC403
<b>Protein Name</b>	Lysosome-associated membrane glycoprotein 3 (LAMP-3) (Lysosomal-associated membrane protein 3) (DC-lysosome-associated membrane glycoprotein) (DC LAMP) (Protein TSC403) (CD antigen CD208)
<b>Immunogen</b>	Synthetic peptide from human protein at AA range: 261-310
<b>Specificity</b>	The antibody detects endogenous DC-LAMP
<b>Formulation</b>	Liquid in PBS containing 50% glycerol, 0.5% BSA and 0.02% sodium azide.
<b>Source</b>	Monoclonal, Mouse,IgG
<b>Purification</b>	The antibody was affinity-purified from mouse antiserum by affinity-chromatography using epitope-specific immunogen.
<b>Dilution</b>	WB 1:500-2000
<b>Concentration</b>	1 mg/ml
<b>Purity</b>	≥90%
<b>Storage Stability</b>	-20°C/1 year
<b>Synonyms</b>	Lysosome-associated membrane glycoprotein 3 (LAMP-3;Lysosomal-associated membrane protein 3;DC-lysosome-associated membrane glycoprotein;DC LAMP;Protein TSC403;CD antigen CD208)
<b>Observed Band</b>	44kD
<b>Cell Pathway</b>	Cell surface . Lysosome membrane ; Single-pass type I membrane protein . Cytoplasmic vesicle membrane ; Single-pass type I membrane protein . Early endosome membrane ; Single-pass type I membrane protein . During dendritic cell maturation, detected on cytoplasmic vesicles (the MHC II compartment) that contain MHC II proteins, LAMP1, LAMP2 and LAMP3 (PubMed:9768752). Detected on lysosomes in mature dendritic cells (PubMed:9768752). .
<b>Tissue Specificity</b>	Detected in tonsil interdigitating dendritic cells, in spleen, lymph node, Peyer's patches in the small intestine, in thymus medulla and in B-cells (at protein level). Expressed in lymphoid organs and dendritic cells. Expressed in lung. Up-regulated in carcinomas of the esophagus, colon, rectum, ureter, stomach, breast, fallopian tube, thyroid and parotid tissues.

**Nanjing BYabscience technology Co.,Ltd**

网址: [www.njbybio.com](http://www.njbybio.com)

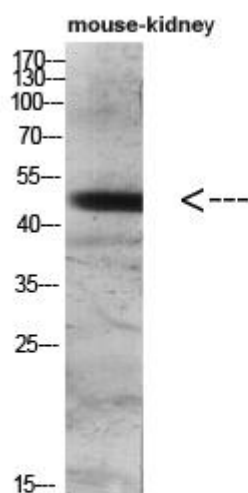
官方热线: 025-5229-8998

监督电话: 15950492658



<b>Function</b>	function:Might change the lysosome function after the transfer of peptide-MHC class II molecules to the surface of dendritic cells.,similarity:Belongs to the LAMP family.,tissue specificity:Expressed in lymphoid organs and dendritic cells. Expressed in lung. Up-regulated in carcinomas of the esophagus, colon, rectum, ureter, stomach, breast, fallopian tube, thyroid and parotid tissues.,
<b>Background</b>	Dendritic cells (DCs) are the most potent antigen-presenting cells. Immature DCs efficiently capture antigens and differentiate into interdigitating dendritic cells (IDCs) in lymphoid tissues that induce primary T-cell responses (summary by de Saint-Vis et al., 1998 [PubMed 9768752]).[supplied by OMIM, Dec 2010],
<b>matters needing attention</b>	Avoid repeated freezing and thawing!
<b>Usage suggestions</b>	This product can be used in immunological reaction related experiments. For more information, please consult technical personnel.

## Products Images



Western Blot analysis of various cells using DC-LAMP Monoclonal Antibody