



CD107b Monoclonal Antibody

Catalog No	BYmab-14094
Isotype	IgG
Reactivity	Human;Rat;Mouse;
Applications	WB
Gene Name	LAMP2
Protein Name	Lysosome-associated membrane glycoprotein 2
Immunogen	The antiserum was produced against synthesized peptide derived from the Internal region of human LAMP2. AA range:121-170
Specificity	CD107b Monoclonal Antibody detects endogenous levels of CD107b protein.
Formulation	Liquid in PBS containing 50% glycerol, 0.5% BSA and 0.02% sodium azide.
Source	Monoclonal, Mouse,IgG
Purification	The antibody was affinity-purified from mouse antiserum by affinity-chromatography using epitope-specific immunogen.
Dilution	WB 1:500-2000
Concentration	1 mg/ml
Purity	≥90%
Storage Stability	-20°C/1 year
Synonyms	LAMP2; Lysosome-associated membrane glycoprotein 2; LAMP-2; Lysosome-associated membrane protein 2; CD107 antigen-like family member B; CD107b
Observed Band	100kD
Cell Pathway	Cell membrane ; Single-pass type I membrane protein . Endosome membrane ; Single-pass type I membrane protein . Lysosome membrane ; Single-pass type I membrane protein . Cytoplasmic vesicle, autophagosome membrane . This protein shuttles between lysosomes, endosomes, and the plasma membrane.
Tissue Specificity	Isoform LAMP-2A is highly expressed in placenta, lung and liver, less in kidney and pancreas, low in brain and skeletal muscle (PubMed:7488019, PubMed:26856698). Isoform LAMP-2B is detected in spleen, thymus, prostate, testis, small intestine, colon, skeletal muscle, brain, placenta, lung, kidney, ovary and pancreas and liver (PubMed:7488019, PubMed:26856698). Isoform LAMP-2C is detected in small intestine, colon, heart, brain, skeletal muscle, and at lower levels in kidney and placenta (PubMed:26856698).
Function	disease:Defects in LAMP2 are the cause of Danon disease (DAND)

Nanjing BYabscience technology Co.,Ltd



[MIM:300257]; also known as glycogen storage disease type 2B (GSD2B). DAND is a lysosomal glycogen storage disease characterized by the clinical triad of cardiomyopathy, vacuolar myopathy and mental retardation. It is often associated with an accumulation of glycogen in muscle and lysosomes.,function:Implicated in tumor cell metastasis. May function in protection of the lysosomal membrane from autodigestion, maintenance of the acidic environment of the lysosome, adhesion when expressed on the cell surface (plasma membrane), and inter-and intracellular signal transduction.,PTM:O- and N-glycosylated; some of the 16 N-linked glycans are polylactosaminoglycans.,similarity:Belongs to the LAMP family.,subcellular location:This protein shuttles between lysosomes, endosomes, and the plasma membrane.,tissue specificity:Isoform LAMP-2A

Background

The protein encoded by this gene is a member of a family of membrane glycoproteins. This glycoprotein provides selectins with carbohydrate ligands. It may play a role in tumor cell metastasis. It may also function in the protection, maintenance, and adhesion of the lysosome. Alternative splicing of this gene results in multiple transcript variants encoding distinct proteins. [provided by RefSeq, Jul 2008],

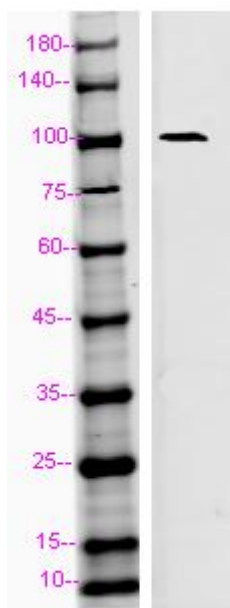
matters needing attention

Avoid repeated freezing and thawing!

Usage suggestions

This product can be used in immunological reaction related experiments. For more information, please consult technical personnel.

Products Images



Western Blot analysis of various cells using CD107b Monoclonal Antibody

Nanjing BYabs science technology Co.,Ltd

网址: www.njbybio.com

官方热线: 025-5229-8998

监督电话: 15950492658