



CD300d Monoclonal Antibody

Catalog No	BYmab-14080
Isotype	IgG
Reactivity	Human;Rat;Mouse;
Applications	WB
Gene Name	CD300LD
Protein Name	CMRF35-like molecule 4
Immunogen	The antiserum was produced against synthesized peptide derived from the Internal region of human CD300LD. AA range:61-110
Specificity	CD300d Monoclonal Antibody detects endogenous levels of CD300d protein.
Formulation	Liquid in PBS containing 50% glycerol, 0.5% BSA and 0.02% sodium azide.
Source	Monoclonal, Mouse,IgG
Purification	The antibody was affinity-purified from mouse antiserum by affinity-chromatography using epitope-specific immunogen.
Dilution	WB 1:500-2000
Concentration	1 mg/ml
Purity	≥90%
Storage Stability	-20°C/1 year
Synonyms	CD300LD; CD300D; CMRF35A4; CMRF35-like molecule 4; CLM-4; CD300 antigen-like family member D; CMRF35-A4; CD300d
Observed Band	22kD
Cell Pathway	Cell membrane ; Single-pass type I membrane protein . Cell surface localization requires the ITAM-bearing Fc receptor FCER1G to overcome ER retention.
Tissue Specificity	Expression seems restricted to cells of myeloid lineage.
Function	similarity:Belongs to the CD300 family.,similarity:Contains 1 Ig-like V-type (immunoglobulin-like) domain.,
Background	similarity:Belongs to the CD300 family.,similarity:Contains 1 Ig-like V-type (immunoglobulin-like) domain.,
matters needing attention	Avoid repeated freezing and thawing!

Nanjing BYabscience technology Co.,Ltd

网址: www.njbybio.com

官方热线: 025-5229-8998

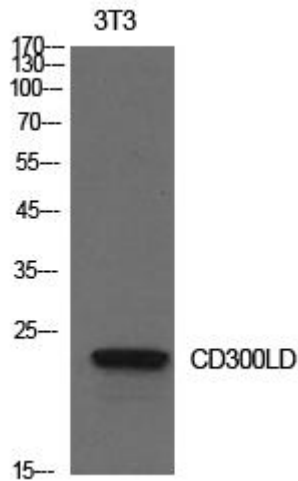
监督电话: 15950492658



Usage suggestions

This product can be used in immunological reaction related experiments. For more information, please consult technical personnel.

Products Images



Western Blot analysis of various cells using CD300d Monoclonal Antibody

Nanjing BYabs science technology Co.,Ltd

网址: www.njbybio.com

官方热线: 025-5229-8998

监督电话: 15950492658