



PSGL-1 Monoclonal Antibody

| | |
|---------------------------|---|
| Catalog No | BYmab-14047 |
| Isotype | IgG |
| Reactivity | Human;Rat;Mouse; |
| Applications | WB |
| Gene Name | SELPLG |
| Protein Name | P-selectin glycoprotein ligand 1 |
| Immunogen | The antiserum was produced against synthesized peptide derived from the N-terminal region of human SELPLG. AA range:1-50 |
| Specificity | PSGL-1 Monoclonal Antibody detects endogenous levels of PSGL-1 protein. |
| Formulation | Liquid in PBS containing 50% glycerol, 0.5% BSA and 0.02% sodium azide. |
| Source | Monoclonal, Mouse,IgG |
| Purification | The antibody was affinity-purified from mouse antiserum by affinity-chromatography using epitope-specific immunogen. |
| Dilution | WB 1:500-2000 |
| Concentration | 1 mg/ml |
| Purity | ≥90% |
| Storage Stability | -20°C/1 year |
| Synonyms | SELPLG; P-selectin glycoprotein ligand 1; PSGL-1; Selectin P ligand; CD162 |
| Observed Band | 45 110kd(glycosylated) |
| Cell Pathway | Membrane; Single-pass type I membrane protein. |
| Tissue Specificity | Expressed on neutrophils, monocytes and most lymphocytes. |
| Function | function:A SLe(x)-type glycan, which through high affinity, calcium-dependent interactions with E-, P- and L-selectins, mediates rapid rolling of leukocytes over vascular surfaces during the initial steps in inflammation. PSGL1 is critical for the initial leukocyte capture.,online information:P-selectin glycoprotein ligand 1 entry,PTM:Displays complex, core-2, sialylated and fucosylated O-linked oligosaccharides, at least some of which appear to contain poly-N-acetyllactosamine with varying degrees of substitution. Mainly disialylated or neutral forms of the core-2 tetrasaccharide, Galbeta1-->4GlcNAcbeta1-->6(Galbeta1-->3)GalNAcOH. The GlcN:GalN ratio is approximately 2:1 and the Man:Fuc ratio 3:5. Contains about 14% fucose with alpha-1,3 linkage present in two forms: One species is a disialylated, |

Nanjing BYabs science technology Co.,Ltd



monofucosylated glycan, and the other, a monosialylated, trifucosylated glycan with a poly

Background

This gene encodes a glycoprotein that functions as a high affinity counter-receptor for the cell adhesion molecules P-, E- and L- selectin expressed on myeloid cells and stimulated T lymphocytes. As such, this protein plays a critical role in leukocyte trafficking during inflammation by tethering of leukocytes to activated platelets or endothelia expressing selectins. This protein requires two post-translational modifications, tyrosine sulfation and the addition of the sialyl Lewis x tetrasaccharide (sLex) to its O-linked glycans, for its high-affinity binding activity. Aberrant expression of this gene and polymorphisms in this gene are associated with defects in the innate and adaptive immune response. Alternate splicing results in multiple transcript variants.[provided by RefSeq, Apr 2011],

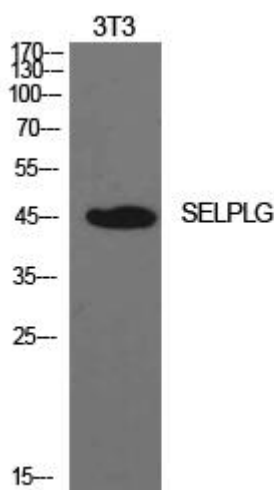
matters needing attention

Avoid repeated freezing and thawing!

Usage suggestions

This product can be used in immunological reaction related experiments. For more information, please consult technical personnel.

Products Images



Western Blot analysis of various cells using PSGL-1 Monoclonal Antibody