



SLAM Monoclonal Antibody

Catalog No	BYmab-14008
Isotype	IgG
Reactivity	Human;Rat;Mouse;
Applications	WB
Gene Name	SLAMF1
Protein Name	Signaling lymphocytic activation molecule
Immunogen	The antiserum was produced against synthesized peptide derived from the Internal region of human SLAMF1. AA range:81-130
Specificity	SLAM Monoclonal Antibody detects endogenous levels of SLAM protein.
Formulation	Liquid in PBS containing 50% glycerol, 0.5% BSA and 0.02% sodium azide.
Source	Monoclonal, Mouse,IgG
Purification	The antibody was affinity-purified from mouse antiserum by affinity-chromatography using epitope-specific immunogen.
Dilution	WB 1:500-2000
Concentration	1 mg/ml
Purity	≥90%
Storage Stability	-20°C/1 year
Synonyms	SLAMF1; SLAM; Signaling lymphocytic activation molecule; CDw150; IPO-3; CD150
Observed Band	37kD
Cell Pathway	Cell membrane ; Single-pass type I membrane protein. Present on the surface of B-cells and T-cells. Located at the plasma membrane contacts between neighboring T-cells (PubMed:11806999). ; [Isoform 3]: Secreted .; [Isoform 4]: Cell membrane . Overexpressed isoform 4 is detected on the cell surface. In glioma cell lines endogenous isoform 4 is detected predominantly in the cytoplasm and colocalized with endoplasmic reticulum and Golgi markers. .
Tissue Specificity	Constitutively expressed on peripheral blood memory T-cells, T-cell clones, immature thymocytes and a proportion of B-cells, and is rapidly induced on naive T-cells after activation (PubMed:7617038). Activated B-cells express isoform 1, isoform 3 and a cytoplasmic isoform (PubMed:9091591). Isoform 4 is expressed in B-cells, primary T-cells, dendritic cells and macrophages. Isoform 4 is expressed in tumors of the central nervous system (PubMed:25710480).
Function	domain:The most membrane-proximal SH2-binding motif interacts with SH2 domain of SH2D1A and does not need to be phosphorylated on tyrosine

Nanjing BYabscience technology Co.,Ltd



residues.,function:High-affinity self-ligand important in bidirectional T-cell to B-cell stimulation. SLAM-induced signal-transduction events in T-lymphocytes are different from those in B-cells. Two modes of SLAM signaling are likely to exist: one in which the inhibitor SH2D1A acts as a negative regulator and another in which protein-tyrosine phosphatase 2C (PTPN11)-dependent signal transduction operates.,PTM:Phosphorylated by FYN.,similarity:Contains 1 Ig-like C2-type (immunoglobulin-like) domain.,similarity:Contains 1 Ig-like V-type (immunoglobulin-like) domain.,subcellular location:Present on the surface of B-cells and T-cells.,subunit:Its cytoplasmic domain interacts with SH2 domain protein 1A (SH2D1A), and with PTPN11. Interacts with INPP5D/SHIP

Background

domain:The most membrane-proximal SH2-binding motif interacts with SH2 domain of SH2D1A and does not need to be phosphorylated on tyrosine residues.,function:High-affinity self-ligand important in bidirectional T-cell to B-cell stimulation. SLAM-induced signal-transduction events in T-lymphocytes are different from those in B-cells. Two modes of SLAM signaling are likely to exist: one in which the inhibitor SH2D1A acts as a negative regulator and another in which protein-tyrosine phosphatase 2C (PTPN11)-dependent signal transduction operates.,PTM:Phosphorylated by FYN.,similarity:Contains 1 Ig-like C2-type (immunoglobulin-like) domain.,similarity:Contains 1 Ig-like V-type (immunoglobulin-like) domain.,subcellular location:Present on the surface of B-cells and T-cells.,subunit:Its cytoplasmic domain interacts with SH2 domain protein 1A (SH2D1A), and with PTPN11. Interacts with INPP5D/SHIP1. Binds to Measles virus HN protein and acts as a receptor for this virus.,tissue specificity:Constitutively expressed on peripheral blood memory T-cells, T-cell clones, immature thymocytes, and a proportion of B-cells, and is rapidly induced on naive T-cells after activation.,

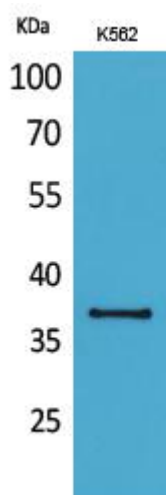
matters needing attention

Avoid repeated freezing and thawing!

Usage suggestions

This product can be used in immunological reaction related experiments. For more information, please consult technical personnel.

Products Images



Western Blot analysis of various cells using SLAM Monoclonal Antibody

Nanjing BYabscience technology Co.,Ltd

网址: www.njbybio.com

官方热线: 025-5229-8998

监督电话: 15950492658