



# CD229 Monoclonal Antibody

<b>Catalog No</b>	BYmab-14002
<b>Isotype</b>	IgG
<b>Reactivity</b>	Human;Rat;Mouse;
<b>Applications</b>	WB
<b>Gene Name</b>	LY9
<b>Protein Name</b>	T-lymphocyte surface antigen Ly-9
<b>Immunogen</b>	The antiserum was produced against synthesized peptide derived from the Internal region of human LY9. AA range:261-310
<b>Specificity</b>	CD229 Monoclonal Antibody detects endogenous levels of CD229 protein.
<b>Formulation</b>	Liquid in PBS containing 50% glycerol, 0.5% BSA and 0.02% sodium azide.
<b>Source</b>	Monoclonal, Mouse,IgG
<b>Purification</b>	The antibody was affinity-purified from mouse antiserum by affinity-chromatography using epitope-specific immunogen.
<b>Dilution</b>	WB 1:500-2000
<b>Concentration</b>	1 mg/ml
<b>Purity</b>	≥90%
<b>Storage Stability</b>	-20°C/1 year
<b>Synonyms</b>	LY9; CDABP0070; T-lymphocyte surface antigen Ly-9; Cell surface molecule Ly-9; Lymphocyte antigen 9; CD229
<b>Observed Band</b>	72kD
<b>Cell Pathway</b>	Membrane; Single-pass type I membrane protein. Cell membrane .
<b>Tissue Specificity</b>	Increased surface expression on T-cells of systemic lupus erythematosus (SLE) patients.
<b>Function</b>	alternative products:Experimental confirmation may be lacking for some isoforms,function:May participate in adhesion reactions between T lymphocytes and accessory cells by homophilic interaction.,similarity:Contains 2 Ig-like C2-type (immunoglobulin-like) domains.,similarity:Contains 2 Ig-like V-type (immunoglobulin-like) domains.,
<b>Background</b>	LY9 belongs to the SLAM family of immunomodulatory receptors (see SLAMF1; MIM 603492) and interacts with the adaptor molecule SAP (SH2D1A; MIM 300490) (Graham et al., 2006 [PubMed 16365421]).[supplied by OMIM, Mar 2008],

**Nanjing BYabscience technology Co.,Ltd**



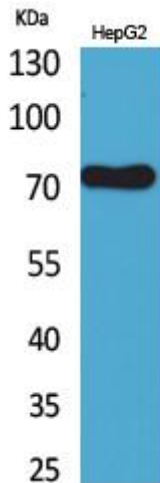
**matters needing attention**

Avoid repeated freezing and thawing!

**Usage suggestions**

This product can be used in immunological reaction related experiments. For more information, please consult technical personnel.

## Products Images



Western Blot analysis of various cells using CD229 Monoclonal Antibody