



CD100 Monoclonal Antibody

Catalog No	BYmab-13996
Isotype	IgG
Reactivity	Human;Mouse;Rat
Applications	WB
Gene Name	SEMA4D
Protein Name	Semaphorin-4D
Immunogen	The antiserum was produced against synthesized peptide derived from the N-terminal region of human SEMA4D. AA range:61-110
Specificity	CD100 Monoclonal Antibody detects endogenous levels of CD100 protein.
Formulation	Liquid in PBS containing 50% glycerol, 0.5% BSA and 0.02% sodium azide.
Source	Monoclonal, Mouse,IgG
Purification	The antibody was affinity-purified from mouse antiserum by affinity-chromatography using epitope-specific immunogen.
Dilution	WB 1:500-2000
Concentration	1 mg/ml
Purity	≥90%
Storage Stability	-20°C/1 year
Synonyms	SEMA4D; C9orf164; CD100; SEMAJ; Semaphorin-4D; A8; BB18; GR3; CD100
Observed Band	95kD
Cell Pathway	Cell membrane ; Single-pass type I membrane protein .
Tissue Specificity	Strongly expressed in skeletal muscle, peripheral blood lymphocytes, spleen, and thymus and also expressed at lower levels in testes, brain, kidney, small intestine, prostate, heart, placenta, lung and pancreas, but not in colon and liver.
Function	function:May play a functional role in the immune system, as well as in the nervous system. Induces B-cells to aggregate and improves their viability in vitro..similarity:Belongs to the semaphorin family..similarity:Contains 1 Ig-like C2-type (immunoglobulin-like) domain..similarity:Contains 1 PSI domain..similarity:Contains 1 Sema domain..subunit:Homodimer. Binds PLXNB1..tissue specificity:Strongly expressed in skeletal muscle, peripheral blood lymphocytes, spleen, and thymus and also expressed at lower levels in testes, brain, kidney, small intestine, prostate, heart, placenta, lung and pancreas, but not in colon and liver.,

Nanjing BYabscience technology Co.,Ltd



Background

function: May play a functional role in the immune system, as well as in the nervous system. Induces B-cells to aggregate and improves their viability in vitro., similarity: Belongs to the semaphorin family., similarity: Contains 1 Ig-like C2-type (immunoglobulin-like) domain., similarity: Contains 1 PSI domain., similarity: Contains 1 Sema domain., subunit: Homodimer. Binds PLXNB1., tissue specificity: Strongly expressed in skeletal muscle, peripheral blood lymphocytes, spleen, and thymus and also expressed at lower levels in testes, brain, kidney, small intestine, prostate, heart, placenta, lung and pancreas, but not in colon and liver.,

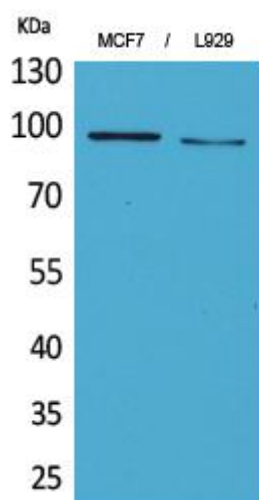
matters needing attention

Avoid repeated freezing and thawing!

Usage suggestions

This product can be used in immunological reaction related experiments. For more information, please consult technical personnel.

Products Images



Western Blot analysis of various cells using CD100 Monoclonal Antibody