



CD79b Monoclonal Antibody

Catalog No	BYmab-13993
Isotype	IgG
Reactivity	Human;Rat;Mouse;
Applications	WB
Gene Name	CD79B
Protein Name	B-cell antigen receptor complex-associated protein beta chain
Immunogen	The antiserum was produced against synthesized peptide derived from the Internal region of human CD79B. AA range:61-110
Specificity	CD79b Monoclonal Antibody detects endogenous levels of CD79b protein.
Formulation	Liquid in PBS containing 50% glycerol, 0.5% BSA and 0.02% sodium azide.
Source	Monoclonal, Mouse,IgG
Purification	The antibody was affinity-purified from mouse antiserum by affinity-chromatography using epitope-specific immunogen.
Dilution	WB 1:500-2000
Concentration	1 mg/ml
Purity	≥90%
Storage Stability	-20°C/1 year
Synonyms	CD79B; B29; IGB; B-cell antigen receptor complex-associated protein beta chain; B-cell-specific glycoprotein B29; Ig-beta; Immunoglobulin-associated B29 protein; CD79b
Observed Band	37kD
Cell Pathway	Cell membrane; Single-pass type I membrane protein. Following antigen binding, the BCR has been shown to translocate from detergent-soluble regions of the cell membrane to lipid rafts although signal transduction through the complex can also occur outside lipid rafts. .
Tissue Specificity	B-cells.
Function	disease:Defects in CD79B are a cause of non-Bruton type agammaglobulinemia [MIM:601495]. Agammaglobulinemia is an immunodeficiency disease which results in developmental defects in the maturation pathway of B-cells.,function:Required in cooperation with CD79A for initiation of the signal transduction cascade activated by the B-cell antigen receptor complex (BCR) which leads to internalization of the complex, trafficking to late endosomes and antigen presentation. Enhances phosphorylation of CD79A, possibly by recruiting

Nanjing BYabscience technology Co.,Ltd



kinases which phosphorylate CD79A or by recruiting proteins which bind to CD79A and protect it from dephosphorylation.,online information:CD79B mutation db,PTM:Phosphorylated on tyrosine upon B-cell activation.,similarity:Contains 1 Ig-like V-type (immunoglobulin-like) domain.,similarity:Contains 1 ITAM domain.,subcellular location:Following antigen binding, the BCR has b

Background

The B lymphocyte antigen receptor is a multimeric complex that includes the antigen-specific component, surface immunoglobulin (Ig). Surface Ig non-covalently associates with two other proteins, Ig-alpha and Ig-beta, which are necessary for expression and function of the B-cell antigen receptor. This gene encodes the Ig-beta protein of the B-cell antigen component. Alternatively spliced transcript variants encoding different isoforms have been described. [provided by RefSeq, Jul 2008],

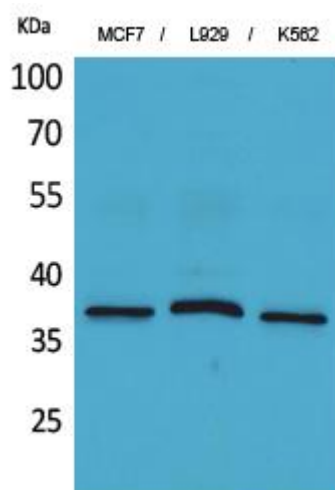
matters needing attention

Avoid repeated freezing and thawing!

Usage suggestions

This product can be used in immunological reaction related experiments. For more information, please consult technical personnel.

Products Images



Western Blot analysis of various cells using CD79b Monoclonal Antibody