



# ERp57 Monoclonal Antibody

Catalog No	BYmab-13978
Isotype	IgG
Reactivity	Human;Mouse;Rat
Applications	WB
Gene Name	PDIA3
Protein Name	Protein disulfide-isomerase A3
Immunogen	The antiserum was produced against synthesized peptide derived from the Internal region of human PDIA3. AA range:111-160
Specificity	ERp57 Monoclonal Antibody detects endogenous levels of ERp57 protein.
Formulation	Liquid in PBS containing 50% glycerol, 0.5% BSA and 0.02% sodium azide.
Source	Monoclonal, Mouse,IgG
Purification	The antibody was affinity-purified from mouse antiserum by affinity-chromatography using epitope-specific immunogen.
Dilution	WB 1:500-2000
Concentration	1 mg/ml
Purity	≥90%
Storage Stability	-20°C/1 year
Synonyms	PDIA3; ERP57; ERP60; GRP58; Protein disulfide-isomerase A3; 58 kDa glucose-regulated protein; 58 kDa microsomal protein; p58; Disulfide isomerase ER-60;Endoplasmic reticulum resident protein 57; ER protein 57; ERp57; Endoplasmic reticulum resident protein 60; ER protein 60; ERp60
Observed Band	55kD
Cell Pathway	Endoplasmic reticulum . Endoplasmic reticulum lumen . Melanosome . Identified by mass spectrometry in melanosome fractions from stage I to stage IV (PubMed:12643545). .
Tissue Specificity	Detected in the flagellum and head region of spermatozoa (at protein level) (PubMed:20400973). Expressed in liver, stomach and colon (at protein level). Expressed in gastric parietal cells and chief cells (at protein level) (PubMed:24188822).
Function	catalytic activity:Catalyzes the rearrangement of -S-S- bonds in proteins.,caution:Was originally thought to be a phosphatidylinositol-4,5-bisphosphate phosphodiesterase type I (phospholipase C-alpha).,mass spectrometry: PubMed:11840567,similarity:Belongs to the protein

**Nanjing BYabscience technology Co.,Ltd**



disulfide isomerase family.,similarity:Contains 2 thioredoxin domains.,subcellular location:Identified by mass spectrometry in melanosome fractions from stage I to stage IV.,subunit:Interacts with ERP27 and CANX.,

#### Background

This gene encodes a protein of the endoplasmic reticulum that interacts with lectin chaperones calreticulin and calnexin to modulate folding of newly synthesized glycoproteins. The protein was once thought to be a phospholipase; however, it has been demonstrated that the protein actually has protein disulfide isomerase activity. It is thought that complexes of lectins and this protein mediate protein folding by promoting formation of disulfide bonds in their glycoprotein substrates. [provided by RefSeq, Jul 2008],

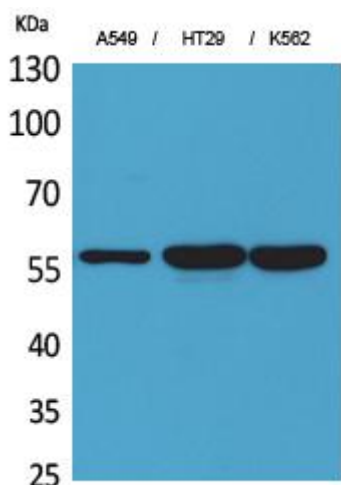
#### matters needing attention

Avoid repeated freezing and thawing!

#### Usage suggestions

This product can be used in immunological reaction related experiments. For more information, please consult technical personnel.

## Products Images



Western Blot analysis of various cells using ERp57 Monoclonal Antibody