



Fgl2 Monoclonal Antibody

| | |
|--------------------|--|
| Catalog No | BYmab-13927 |
| Isotype | IgG |
| Reactivity | Human;Rat;Mouse; |
| Applications | WB |
| Gene Name | FGL2 |
| Protein Name | Fibroleukin |
| Immunogen | The antiserum was produced against synthesized peptide derived from human Fgl2. AA range:38-87 |
| Specificity | Fgl2 Monoclonal Antibody detects endogenous levels of Fgl2 protein. |
| Formulation | Liquid in PBS containing 50% glycerol, 0.5% BSA and 0.02% sodium azide. |
| Source | Monoclonal, Mouse,IgG |
| Purification | The antibody was affinity-purified from mouse antiserum by affinity-chromatography using epitope-specific immunogen. |
| Dilution | WB 1:500-2000 |
| Concentration | 1 mg/ml |
| Purity | ≥90% |
| Storage Stability | -20°C/1 year |
| Synonyms | FGL2; Fibroleukin; Fibrinogen-like protein 2; pT49 |
| Observed Band | 55kD |
| Cell Pathway | Secreted. |
| Tissue Specificity | Constitutively expressed in cytotoxic T-cells. |
| Function | function:May play a role in physiologic lymphocyte functions at mucosal sites.,similarity:Contains 1 fibrinogen C-terminal domain.,subunit:Homotetramer; disulfide-linked.,tissue specificity:Constitutively expressed in cytotoxic T-cells., |
| Background | fibrinogen like 2(FGL2) Homo sapiens The protein encoded by this gene is a secreted protein that is similar to the beta- and gamma-chains of fibrinogen. The carboxyl-terminus of the encoded protein consists of the fibrinogen-related domains (FRED). The encoded protein forms a tetrameric complex which is stabilized by interchain disulfide bonds. This protein may play a role in physiologic functions at mucosal sites. [provided by RefSeq, Jul 2008], |

Nanjing BYabscience technology Co.,Ltd



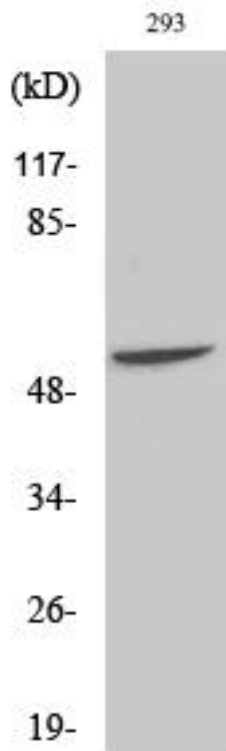
matters needing attention

Avoid repeated freezing and thawing!

Usage suggestions

This product can be used in immunological reaction related experiments. For more information, please consult technical personnel.

Products Images



Western Blot analysis of various cells using Fgl2 Monoclonal Antibody