



EMR2 Monoclonal Antibody

Catalog No	BYmab-13921
Isotype	IgG
Reactivity	Human
Applications	WB
Gene Name	EMR2
Protein Name	EGF-like module-containing mucin-like hormone receptor-like 2
Immunogen	The antiserum was produced against synthesized peptide derived from human EMR2. AA range:765-814
Specificity	EMR2 Monoclonal Antibody detects endogenous levels of EMR2 protein.
Formulation	Liquid in PBS containing 50% glycerol, 0.5% BSA and 0.02% sodium azide.
Source	Monoclonal, Mouse,IgG
Purification	The antibody was affinity-purified from mouse antiserum by affinity-chromatography using epitope-specific immunogen.
Dilution	WB 1:500-2000
Concentration	1 mg/ml
Purity	≥90%
Storage Stability	-20°C/1 year
Synonyms	EMR2; EGF-like module-containing mucin-like hormone receptor-like 2; EGF-like module receptor 2; CD antigen CD312
Observed Band	85kD
Cell Pathway	Cell membrane ; Multi-pass membrane protein. Cell projection, ruffle membrane ; Multi-pass membrane protein. Localized at the leading edge of migrating cells. .
Tissue Specificity	Expression is restricted to myeloid cells. Highest expression was found in peripheral blood leukocytes, followed by spleen and lymph nodes, with intermediate to low levels in thymus, bone marrow, fetal liver, placenta, and lung, and no expression in heart, brain, skeletal muscle, kidney, or pancreas. Expression is also detected in monocyte/macrophage and Jurkat cell lines but not in other cell lines tested. High expression in mast cells (PubMed:26841242).
Function	alternative products:A number of isoforms are produced. A number of isoforms consisting of various number of EGF-like domains seems to exist. A soluble form due to a frameshift which introduced a stop codon immediately before the first TM domain is also detected,domain:Binding to chondroitin sulfate is mediated by the fourth EGF domain.,domain:The GPS domain is necessary, but not sufficient for receptor cleavage, which require the entire extracellular stalk.,function:Receptor

Nanjing BYabscience technology Co.,Ltd



probably involved in cell attachment.,PTM:Proteolytically cleaved into 2 subunits, an extracellular alpha subunit and a seven-transmembrane subunit.,similarity:Belongs to the G-protein coupled receptor 2 family. LN-TM7 subfamily.,similarity:Contains 1 GPS domain.,similarity:Contains 5 EGF-like domains.,subunit:Forms a heterodimer, consisting of a large extracellular region non-covalently linked to a seven-transmembrane

Background

This gene encodes a member of the class B seven-span transmembrane (TM7) subfamily of G-protein coupled receptors. These proteins are characterized by an extended extracellular region with a variable number of N-terminal epidermal growth factor-like domains coupled to a TM7 domain via a mucin-like spacer domain. The encoded protein is expressed mainly in myeloid cells where it promotes cell-cell adhesion through interaction with chondroitin sulfate chains. This gene is situated in a cluster of related genes on chromosome 19. Alternatively spliced transcript variants encoding multiple isoforms have been observed for this gene. [provided by RefSeq, Aug 2012],

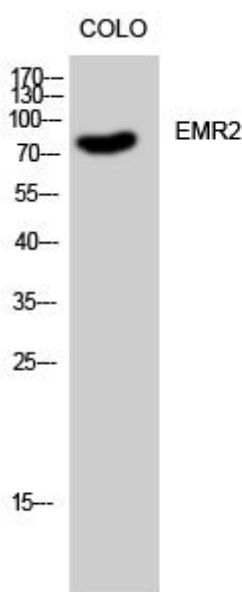
matters needing attention

Avoid repeated freezing and thawing!

Usage suggestions

This product can be used in immunological reaction related experiments. For more information, please consult technical personnel.

Products Images



Western Blot analysis of various cells using EMR2 Monoclonal Antibody