



CD2BP2 Monoclonal Antibody

| | |
|---------------------------|--|
| Catalog No | BYmab-13891 |
| Isotype | IgG |
| Reactivity | Human;Monkey |
| Applications | WB |
| Gene Name | CD2BP2 |
| Protein Name | CD2 antigen cytoplasmic tail-binding protein 2 |
| Immunogen | The antiserum was produced against synthesized peptide derived from human CD2 Tail-binding. AA range:101-150 |
| Specificity | CD2BP2 Monoclonal Antibody detects endogenous levels of CD2BP2 protein. |
| Formulation | Liquid in PBS containing 50% glycerol, 0.5% BSA and 0.02% sodium azide. |
| Source | Monoclonal, Mouse,IgG |
| Purification | The antibody was affinity-purified from mouse antiserum by affinity-chromatography using epitope-specific immunogen. |
| Dilution | WB 1:500-2000 |
| Concentration | 1 mg/ml |
| Purity | ≥90% |
| Storage Stability | -20°C/1 year |
| Synonyms | CD2BP2; KIAA1178; CD2 antigen cytoplasmic tail-binding protein 2; CD2 cytoplasmic domain-binding protein 2; CD2 tail-binding protein 2 |
| Observed Band | 50kD |
| Cell Pathway | Cytoplasm. Nucleus. Predominantly nuclear. |
| Tissue Specificity | Aorta,Brain,Epithelium,Liver,Lung, |
| Function | similarity:Contains 1 GYF domain.,subunit:Binds the cytoplasmic domain of CD2 through the GYF domain., |
| Background | This gene encodes a bi-functional protein. In the cytoplasm, the encoded protein binds the cytoplasmic tail of human surface antigen CD2 via its C-terminal GYF domain, and regulate CD2-triggered T lymphocyte activation. In the nucleus, this protein is a component of the U5 small nuclear ribonucleoprotein complex and is involved in RNA splicing. A pseudogene has been identified on chromosome 7. Alternative splicing results in multiple transcript variants but their biological validity has not been determined. [provided by RefSeq, Nov 2008], |

Nanjing BYabs science technology Co.,Ltd



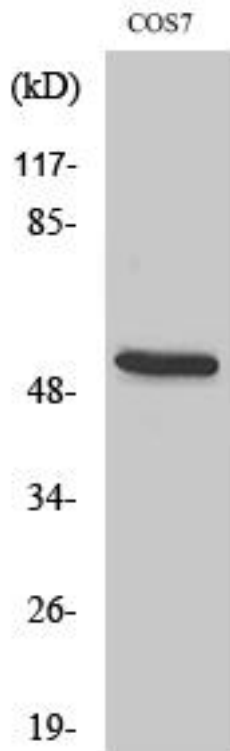
matters needing attention

Avoid repeated freezing and thawing!

Usage suggestions

This product can be used in immunological reaction related experiments. For more information, please consult technical personnel.

Products Images



Western Blot analysis of various cells using CD2BP2 Monoclonal Antibody