



CD179b Monoclonal Antibody

Catalog No	BYmab-13884
Isotype	IgG
Reactivity	Human;Rat;Mouse;
Applications	WB
Gene Name	IGLL1/IGLC1/IGLC2/IGLC3/IGLC6/IGLC7
Protein Name	Immunoglobulin lambda-like polypeptide 1
Immunogen	The antiserum was produced against synthesized peptide derived from human CD179b. AA range:26-75
Specificity	CD179b Monoclonal Antibody detects endogenous levels of CD179b protein.
Formulation	Liquid in PBS containing 50% glycerol, 0.5% BSA and 0.02% sodium azide.
Source	Monoclonal, Mouse,IgG
Purification	The antibody was affinity-purified from mouse antiserum by affinity-chromatography using epitope-specific immunogen.
Dilution	WB 1:500-2000
Concentration	1 mg/ml
Purity	≥90%
Storage Stability	-20°C/1 year
Synonyms	IGLL1; IGL1; Immunoglobulin lambda-like polypeptide 1; CD179 antigen-like family member B; Ig lambda-5; Immunoglobulin omega polypeptide; Immunoglobulin-related protein 14.1; CD antigen CD179b; IGLC1; Ig lambda-1 chain C regions; IGLC2; Ig
Observed Band	23kD
Cell Pathway	Endoplasmic reticulum . Secreted . In pre-B cells, localizes predominantly to the endoplasmic reticulum. .
Tissue Specificity	Expressed only in pre-B-cells and a special B-cell line (which is surface Ig negative).
Function	disease:Defects in IGLL1 are a cause of autosomal recessive non-Bruton type agammaglobulinemia [MIM:601495]. It is characterized by agammaglobulinemia and markedly reduced numbers of B cells.,online information:IGLL1 mutation db,similarity:Contains 1 Ig-like C1-type (immunoglobulin-like) domain.,subunit:Associates non-covalently with VPRED1.,tissue specificity:Expressed only in pre-B-cells and a special B-cell line (which is surface Ig negative).,

Nanjing BYabscience technology Co.,Ltd



Background

immunoglobulin lambda like polypeptide 1 (IGLL1) Homo sapiens The preB cell receptor is found on the surface of proB and preB cells, where it is involved in transduction of signals for cellular proliferation, differentiation from the proB cell to the preB cell stage, allelic exclusion at the Ig heavy chain gene locus, and promotion of Ig light chain gene rearrangements. The preB cell receptor is composed of a membrane-bound Ig mu heavy chain in association with a heterodimeric surrogate light chain. This gene encodes one of the surrogate light chain subunits and is a member of the immunoglobulin gene superfamily. This gene does not undergo rearrangement. Mutations in this gene can result in B cell deficiency and agammaglobulinemia, an autosomal recessive disease in which few or no gamma globulins or antibodies are made. Two transcript variants encoding different isoforms have been found for this gene. [provided by RefSeq, Jul 2008],

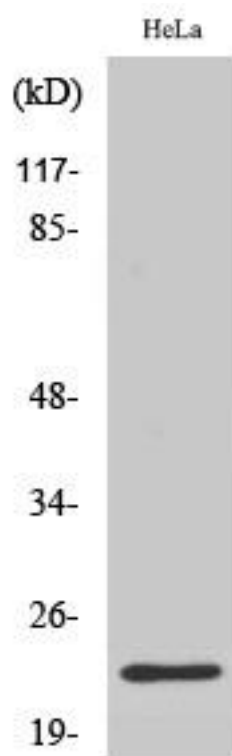
matters needing attention

Avoid repeated freezing and thawing!

Usage suggestions

This product can be used in immunological reaction related experiments. For more information, please consult technical personnel.

Products Images



Western Blot analysis of various cells using CD179b Monoclonal Antibody

Nanjing BYabs science technology Co.,Ltd

网址: www.njbybio.com

官方热线: 025-5229-8998

监督电话: 15950492658