



C1QBP Monoclonal Antibody

Catalog No	BYmab-13872
Isotype	IgG
Reactivity	Human;Mouse;Rat
Applications	WB
Gene Name	C1QBP
Protein Name	Complement component 1 Q subcomponent-binding protein mitochondrial
Immunogen	The antiserum was produced against synthesized peptide derived from human C1QBP. AA range:61-110
Specificity	C1QBP Monoclonal Antibody detects endogenous levels of C1QBP protein.
Formulation	Liquid in PBS containing 50% glycerol, 0.5% BSA and 0.02% sodium azide.
Source	Monoclonal, Mouse,IgG
Purification	The antibody was affinity-purified from mouse antiserum by affinity-chromatography using epitope-specific immunogen.
Dilution	WB 1:500-2000
Concentration	1 mg/ml
Purity	≥90%
Storage Stability	-20°C/1 year
Synonyms	C1QBP; GC1QBP; HABP1; SF2P32; Complement component 1 Q subcomponent-binding protein; mitochondrial; GC1q-R protein; Glycoprotein gC1qBP; C1qBP; Hyaluronan-binding protein 1; Mitochondrial matrix protein p32; p33
Observed Band	32kD
Cell Pathway	Mitochondrion matrix . Nucleus . Nucleus, nucleolus . Cell membrane ; Peripheral membrane protein ; Extracellular side. Secreted. Cytoplasm . Seems to be predominantly localized to mitochondria. Secreted by activated lymphocytes. Localizes to the nucleolus when coexpressed with POLGARF (PubMed:32958672). Interaction with POLGARF is likely to result in prevention of C1QBP maturation and redirection from mitochondria to nucleoli (PubMed:32958672). .
Tissue Specificity	Expressed on cell surface of peripheral blood cells (at protein level); Surface expression is reported for macrophages and monocyte-derived dendritic cells.
Function	caution:Was originally (PubMed:1830244 and PubMed:8262387) thought to be a pre-mRNA splicing factor SF2 p32 subunit and to play a role in preventing exon

Nanjing BYabscience technology Co.,Ltd



skipping, ensuring the accuracy of splicing and regulating alternative splicing.,function:Not known. Binds to the globular "heads" of C1Q thus inhibiting C1 activation.,similarity:Belongs to the MAM33 family.,subunit:Interacts with Rubella virus capsid protein.,

Background

The human complement subcomponent C1q associates with C1r and C1s in order to yield the first component of the serum complement system. The protein encoded by this gene is known to bind to the globular heads of C1q molecules and inhibit C1 activation. This protein has also been identified as the p32 subunit of pre-mRNA splicing factor SF2, as well as a hyaluronic acid-binding protein. [provided by RefSeq, Jul 2008],

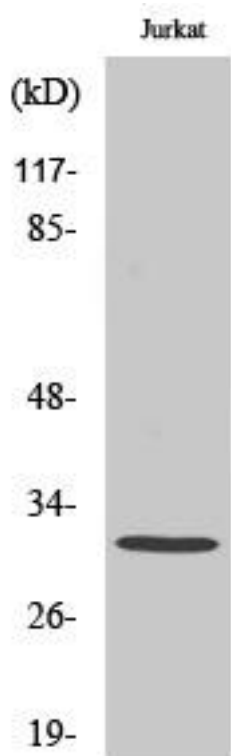
matters needing attention

Avoid repeated freezing and thawing!

Usage suggestions

This product can be used in immunological reaction related experiments. For more information, please consult technical personnel.

Products Images



Western Blot analysis of various cells using C1QBP Monoclonal Antibody