



BST-1 Monoclonal Antibody

| | |
|--------------------|---|
| Catalog No | BYmab-13870 |
| Isotype | IgG |
| Reactivity | Human;Mouse;Rat;Monkey |
| Applications | WB |
| Gene Name | BST1 |
| Protein Name | ADP-ribosyl cyclase 2 |
| Immunogen | The antiserum was produced against synthesized peptide derived from human BST1. AA range:71-120 |
| Specificity | BST-1 Monoclonal Antibody detects endogenous levels of BST-1 protein. |
| Formulation | Liquid in PBS containing 50% glycerol, 0.5% BSA and 0.02% sodium azide. |
| Source | Monoclonal, Mouse,IgG |
| Purification | The antibody was affinity-purified from mouse antiserum by affinity-chromatography using epitope-specific immunogen. |
| Dilution | WB 1:500-2000 |
| Concentration | 1 mg/ml |
| Purity | ≥90% |
| Storage Stability | -20°C/1 year |
| Synonyms | BST1; ADP-ribosyl cyclase 2; Bone marrow stromal antigen 1; BST-1; Cyclic ADP-ribose hydrolase 2; cADPr hydrolase 2; CD antigen CD157 |
| Observed Band | 34kD |
| Cell Pathway | Cell membrane; Lipid-anchor, GPI-anchor. |
| Tissue Specificity | Widely expressed. |
| Function | catalytic activity:NAD(+) + H(2)O = ADP-ribose + nicotinamide.,disease:Rheumatoid arthritis (RA) patients show enhanced expression of BST-1 transcripts in bone marrow stromal cell lines. This suggests that BST-1 overexpression may play a role in B-cell abnormalities in RA.,function:Synthesizes cyclic ADP-ribose, a second messenger that elicits calcium release from intracellular stores. May be involved in pre-B-cell growth.,similarity:Belongs to the ADP-ribosyl cyclase family.,subunit:Homodimer.,tissue specificity:Widely expressed., |

Nanjing BYabscience technology Co.,Ltd



Background

Bone marrow stromal cell antigen-1 is a stromal cell line-derived glycosylphosphatidylinositol-anchored molecule that facilitates pre-B-cell growth. The deduced amino acid sequence exhibits 33% similarity with CD38. BST1 expression is enhanced in bone marrow stromal cell lines derived from patients with rheumatoid arthritis. The Monoclonal B-cell abnormalities in rheumatoid arthritis may be, at least in part, attributed to BST1 overexpression in the stromal cell population. [provided by RefSeq, Jul 2008],

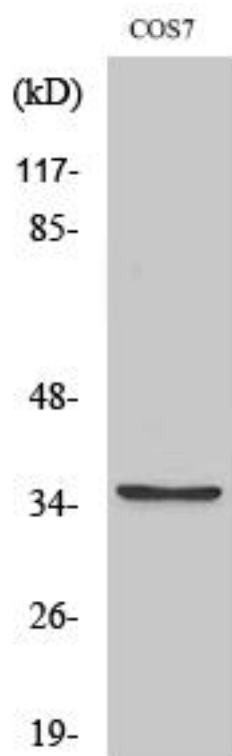
matters needing attention

Avoid repeated freezing and thawing!

Usage suggestions

This product can be used in immunological reaction related experiments. For more information, please consult technical personnel.

Products Images



Western Blot analysis of various cells using BST-1 Monoclonal Antibody