



# BAM32 (phospho Tyr139) Monoclonal Antibody

<b>Catalog No</b>	BYmab-13848
<b>Isotype</b>	IgG
<b>Reactivity</b>	Human;Mouse
<b>Applications</b>	WB
<b>Gene Name</b>	DAPP1
<b>Protein Name</b>	Dual adapter for phosphotyrosine and 3-phosphotyrosine and 3-phosphoinositide
<b>Immunogen</b>	The antiserum was produced against synthesized peptide derived from human DAPP1 around the phosphorylation site of Tyr139. AA range:105-154
<b>Specificity</b>	Phospho-BAM32 (Y139) Monoclonal Antibody detects endogenous levels of BAM32 protein only when phosphorylated at Y139.
<b>Formulation</b>	Liquid in PBS containing 50% glycerol, 0.5% BSA and 0.02% sodium azide.
<b>Source</b>	Monoclonal, Mouse,IgG
<b>Purification</b>	The antibody was affinity-purified from mouse antiserum by affinity-chromatography using epitope-specific immunogen.
<b>Dilution</b>	WB 1:500-2000
<b>Concentration</b>	1 mg/ml
<b>Purity</b>	≥90%
<b>Storage Stability</b>	-20°C/1 year
<b>Synonyms</b>	DAPP1; BAM32; HSPC066; Dual adapter for phosphotyrosine and 3-phosphotyrosine and 3-phosphoinositide; hDAPP1; B lymphocyte adapter protein Bam32; B-cell adapter molecule of 32 kDa
<b>Observed Band</b>	32kD
<b>Cell Pathway</b>	Cytoplasm . Membrane ; Peripheral membrane protein . Membrane-associated after cell stimulation leading to its translocation.
<b>Tissue Specificity</b>	Highly expressed in placenta and lung, followed by brain, heart, kidney, liver, pancreas and skeletal muscle. Expressed by B-lymphocytes, but not T-lymphocytes or nonhematopoietic cells.
<b>Function</b>	function:May act as a B-cell-associated adapter that regulates B-cell antigen receptor (BCR)-signaling downstream of PI3K.,induction:Upon B-cell activation.,PTM:Phosphorylated on tyrosine residues.,similarity:Contains 1 PH domain.,similarity:Contains 1 SH2 domain.,subcellular location:Membrane-associated after cell stimulation leading to its translocation.,subunit:Interacts with PtdIns(3,4,5)P3 and PLCG2. In vitro, interacts with PtdIns(3,4)P2.,tissue specificity:Highly expressed in placenta and

**Nanjing BYabscience technology Co.,Ltd**



lung, followed by brain, heart, kidney, liver, pancreas and skeletal muscle. Expressed by B-lymphocytes, but not T-lymphocytes or nonhematopoietic cells.,

## Background

function: May act as a B-cell-associated adapter that regulates B-cell antigen receptor (BCR)-signaling downstream of PI3K., induction: Upon B-cell activation., PTM: Phosphorylated on tyrosine residues., similarity: Contains 1 PH domain., similarity: Contains 1 SH2 domain., subcellular location: Membrane-associated after cell stimulation leading to its translocation., subunit: Interacts with PtdIns(3,4,5)P3 and PLCG2. In vitro, interacts with PtdIns(3,4)P2., tissue specificity: Highly expressed in placenta and lung, followed by brain, heart, kidney, liver, pancreas and skeletal muscle. Expressed by B-lymphocytes, but not T-lymphocytes or nonhematopoietic cells.,

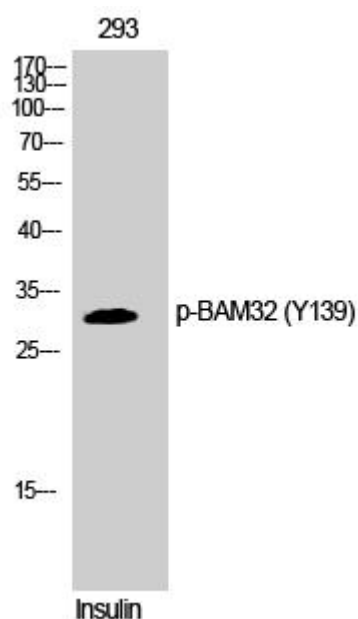
## matters needing attention

Avoid repeated freezing and thawing!

## Usage suggestions

This product can be used in immunological reaction related experiments. For more information, please consult technical personnel.

## Products Images



Western Blot analysis of various cells using BAM32 (phospho Tyr139) Monoclonal Antibody