



# Cleaved-MASP-1 HC (R448) Monoclonal Antibody

<b>Catalog No</b>	BYmab-13779
<b>Isotype</b>	IgG
<b>Reactivity</b>	Human;Rat;Mouse;
<b>Applications</b>	WB
<b>Gene Name</b>	MASP1
<b>Protein Name</b>	Mannan-binding lectin serine protease 1
<b>Immunogen</b>	The antiserum was produced against synthesized peptide derived from human MASP1. AA range:399-448
<b>Specificity</b>	Cleaved-MASP-1 HC (R448) Monoclonal Antibody detects endogenous levels of fragment of activated MASP-1 HC protein resulting from cleavage adjacent to R448.
<b>Formulation</b>	Liquid in PBS containing 50% glycerol, 0.5% BSA and 0.02% sodium azide.
<b>Source</b>	Monoclonal, Mouse,IgG
<b>Purification</b>	The antibody was affinity-purified from mouse antiserum by affinity-chromatography using epitope-specific immunogen.
<b>Dilution</b>	WB 1:500-2000
<b>Concentration</b>	1 mg/ml
<b>Purity</b>	≥90%
<b>Storage Stability</b>	-20°C/1 year
<b>Synonyms</b>	MASP1; CRARF; CRARF1; PRSS5; Mannan-binding lectin serine protease 1; Complement factor MASP-3; Complement-activating component of Ra-reactive factor; Mannose-binding lectin-associated serine protease 1; MASP-1; Mannose-binding protein-asso
<b>Observed Band</b>	47kD
<b>Cell Pathway</b>	Secreted .
<b>Tissue Specificity</b>	Protein of the plasma which is primarily expressed by liver.
<b>Function</b>	enzyme regulation:Inhibited by SERPING1 and A2M.,function:Functions in the lectin pathway of complement, which performs a key role in innate immunity by recognizing pathogens through patterns of sugar moieties and neutralizing them. The lectin pathway is triggered upon binding of mannan-binding lectin (MBL) and ficolins to sugar moieties which leads to activation of the associated proteases MASP1 and MASP2. Functions as an endopeptidase and may activate MASP2 or

**Nanjing BYabscience technology Co.,Ltd**



C2 or directly activate C3 the key component of complement reaction. Isoform 2 may have an inhibitory effect on the activation of the lectin pathway of complement or may cleave IGFBP5. PTM: Autoproteolytic processing of the proenzyme produces the active enzyme composed on the heavy and the light chain held together by a disulfide bond. Isoform 1 but not isoform 2 is activated through autoproteolytic processing. PTM: N-glycosylated.

#### Background

mannan binding lectin serine peptidase 1(MASP1) Homo sapiens This gene encodes a serine protease that functions as a component of the lectin pathway of complement activation. The complement pathway plays an essential role in the innate and adaptive immune response. The encoded protein is synthesized as a zymogen and is activated when it complexes with the pathogen recognition molecules of lectin pathway, the mannose-binding lectin and the ficolins. This protein is not directly involved in complement activation but may play a role as an amplifier of complement activation by cleaving complement C2 or by activating another complement serine protease, MASP-2. The encoded protein is also able to cleave fibrinogen and factor XIII and may be involved in coagulation. A splice variant of this gene which lacks the serine protease domain functions as an inhibitor of the complement pathway. Alternate splicing results in multiple transcript variants.[p

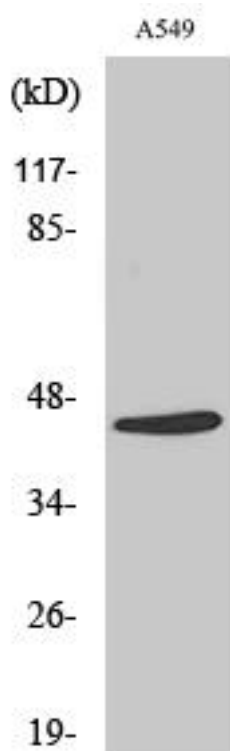
#### matters needing attention

Avoid repeated freezing and thawing!

#### Usage suggestions

This product can be used in immunological reaction related experiments. For more information, please consult technical personnel.

## Products Images



Western Blot analysis of various cells using  
Cleaved-MASP-1 HC (R448) Monoclonal Antibody

Nanjing BYabscience technology Co.,Ltd