



CRF-R1 Monoclonal Antibody

Catalog No	BYmab-13739
Isotype	IgG
Reactivity	Human;Mouse;Rat
Applications	WB
Gene Name	CRHR1
Protein Name	Corticotropin-releasing factor receptor 1
Immunogen	The antiserum was produced against synthesized peptide derived from the Internal region of human CRHR1. AA range:71-120
Specificity	CRF-R1 Monoclonal Antibody detects endogenous levels of CRF-R1 protein.
Formulation	Liquid in PBS containing 50% glycerol, 0.5% BSA and 0.02% sodium azide.
Source	Monoclonal, Mouse,IgG
Purification	The antibody was affinity-purified from mouse antiserum by affinity-chromatography using epitope-specific immunogen.
Dilution	WB 1:500-2000
Concentration	1 mg/ml
Purity	≥90%
Storage Stability	-20°C/1 year
Synonyms	CRHR1; CRFR; CRFR1; CRHR; Corticotropin-releasing factor receptor 1; CRF-R-1; CRF-R1; CRFR-1; Corticotropin-releasing hormone receptor 1; CRH-R-1; CRH-R1
Observed Band	50kD
Cell Pathway	Cell membrane; Multi-pass membrane protein. Endosome. Agonist-binding promotes endocytosis.
Tissue Specificity	Predominantly expressed in the cerebellum, pituitary, cerebral cortex and olfactory lobe.
Function	function:This is a receptor for corticotropin releasing factor. Shows high-affinity CRF binding. The activity of this receptor is mediated by G proteins which activate adenylyl cyclase.,PTM:C-terminal Ser or Thr residues may be phosphorylated.,similarity:Belongs to the G-protein coupled receptor 2 family.,tissue specificity:Predominantly expressed in the cerebellum, pituitary, cerebral cortex and olfactory lobe.,
Background	This gene encodes a G-protein coupled receptor that binds neuropeptides of the corticotropin releasing hormone family that are major regulators of the

Nanjing BYabscience technology Co.,Ltd



hypothalamic-pituitary-adrenal pathway. The encoded protein is essential for the activation of signal transduction pathways that regulate diverse physiological processes including stress, reproduction, immune response and obesity. Alternative splicing results in multiple transcript variants. Naturally-occurring readthrough transcription between this gene and upstream GeneID:147081 results in transcripts that encode isoforms that share similarity with the products of this gene. [provided by RefSeq, Aug 2016],

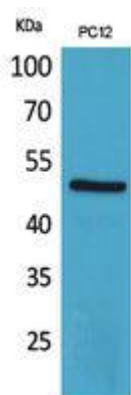
matters needing attention

Avoid repeated freezing and thawing!

Usage suggestions

This product can be used in immunological reaction related experiments. For more information, please consult technical personnel.

Products Images



Western Blot analysis of various cells using CRF-R1 Monoclonal Antibody

Nanjing BYabscience technology Co.,Ltd

网址: www.njbybio.com

官方热线: 025-5229-8998

监督电话: 15950492658