



IL-1RII Monoclonal Antibody

Catalog No	BYmab-13734
Isotype	IgG
Reactivity	Human;Rat;Mouse;
Applications	WB
Gene Name	IL1R2
Protein Name	Interleukin-1 receptor type 2
Immunogen	The antiserum was produced against synthesized peptide derived from the Internal region of human IL1R2. AA range:141-190
Specificity	IL-1RII Monoclonal Antibody detects endogenous levels of IL-1RII protein.
Formulation	Liquid in PBS containing 50% glycerol, 0.5% BSA and 0.02% sodium azide.
Source	Monoclonal, Mouse,IgG
Purification	The antibody was affinity-purified from mouse antiserum by affinity-chromatography using epitope-specific immunogen.
Dilution	WB 1:500-2000
Concentration	1 mg/ml
Purity	≥90%
Storage Stability	-20°C/1 year
Synonyms	IL1R2; IL1RB; Interleukin-1 receptor type 2; IL-1R-2; IL-1RT-2; IL-1RT2; CD121 antigen-like family member B; CDw121b; IL-1 type II receptor; Interleukin-1 receptor beta; IL-1R-beta; Interleukin-1 receptor type II; CD121b
Observed Band	43kD
Cell Pathway	[Isoform Short]: Secreted .; [Isoform Long]: Cell membrane; Single-pass type I membrane protein.
Tissue Specificity	B-cell,Colon,Ovary,
Function	function:Receptor for interleukin-1 alpha (IL-1A), beta (IL-1B), and interleukin-1 receptor antagonist protein (IL-1ra).,similarity:Belongs to the interleukin-1 receptor family.,similarity:Contains 3 Ig-like C2-type (immunoglobulin-like) domains.,
Background	The protein encoded by this gene is a cytokine receptor that belongs to the interleukin 1 receptor family. This protein binds interleukin alpha (IL1A), interleukin beta (IL1B), and interleukin 1 receptor, type I(IL1R1/IL1RA), and acts as a decoy receptor that inhibits the activity of its ligands. Interleukin 4 (IL4) is reported to

Nanjing BYabscience technology Co.,Ltd



antagonize the activity of interleukin 1 by inducing the expression and release of this cytokine. This gene and three other genes form a cytokine receptor gene cluster on chromosome 2q12. Alternative splicing results in multiple transcript variants and protein isoforms. Alternative splicing produces both membrane-bound and soluble proteins. A soluble protein is also produced by proteolytic cleavage. [provided by RefSeq, May 2012],

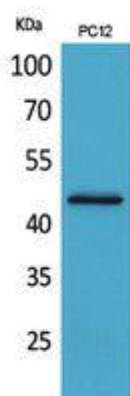
matters needing attention

Avoid repeated freezing and thawing!

Usage suggestions

This product can be used in immunological reaction related experiments. For more information, please consult technical personnel.

Products Images



Western Blot analysis of various cells using IL-1RII Monoclonal Antibody

Nanjing BYabs science technology Co.,Ltd

网址: www.njbybio.com

官方热线: 025-5229-8998

监督电话: 15950492658