



# CD300g Monoclonal Antibody

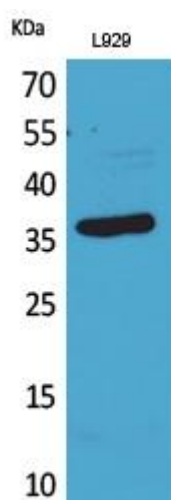
<b>Catalog No</b>	BYmab-13722
<b>Isotype</b>	IgG
<b>Reactivity</b>	Human;Rat;Mouse;
<b>Applications</b>	WB
<b>Gene Name</b>	CD300LG
<b>Protein Name</b>	CMRF35-like molecule 9
<b>Immunogen</b>	The antiserum was produced against synthesized peptide derived from the Internal region of human CD300LG. AA range:41-90
<b>Specificity</b>	CD300g Monoclonal Antibody detects endogenous levels of CD300g protein.
<b>Formulation</b>	Liquid in PBS containing 50% glycerol, 0.5% BSA and 0.02% sodium azide.
<b>Source</b>	Monoclonal, Mouse,IgG
<b>Purification</b>	The antibody was affinity-purified from mouse antiserum by affinity-chromatography using epitope-specific immunogen.
<b>Dilution</b>	WB 1:500-2000
<b>Concentration</b>	1 mg/ml
<b>Purity</b>	≥90%
<b>Storage Stability</b>	-20°C/1 year
<b>Synonyms</b>	CD300LG; CLM9; TREM4; CMRF35-like molecule 9; CLM-9; CD300 antigen-like family member G; Triggering receptor expressed on myeloid cells 4; TREM-4; CD300g
<b>Observed Band</b>	36kD
<b>Cell Pathway</b>	Apical cell membrane ; Single-pass type I membrane protein . Basolateral cell membrane ; Single-pass type I membrane protein . Endosome, multivesicular body membrane ; Single-pass type I membrane protein . Transcytoses across the cytoplasm. .
<b>Tissue Specificity</b>	Highly expressed in heart, skeletal muscle and placenta.
<b>Function</b>	domain:Ig-like V-type domain mediates binding to lymphocyte.,function:Receptor which may mediate L-selectin-dependent lymphocyte rollings. Binds SELL in a calcium dependent manner. Binds lymphocyte.,PTM:O-glycosylated with sialylated oligosaccharides.,similarity:Belongs to the CD300 family.,similarity:Contains 1 Ig-like V-type (immunoglobulin-like) domain.,tissue specificity:Highly expressed in heart, skeletal muscle and placenta.,

**Nanjing BYabscience technology Co.,Ltd**



Background	Members of the CD300 (see MIM 606786)-like (CD300L) family, such as CD300LG, are widely expressed on hematopoietic cells. All CD300L proteins are type I cell surface glycoproteins that contain a single immunoglobulin (Ig) V-like domain (Takatsu et al., 2006 [PubMed 16876123]).[supplied by OMIM, Mar 2008],
matters needing attention	Avoid repeated freezing and thawing!
Usage suggestions	This product can be used in immunological reaction related experiments. For more information, please consult technical personnel.

## Products Images



Western Blot analysis of various cells using CD300g Monoclonal Antibody