



# VPAC2 Monoclonal Antibody

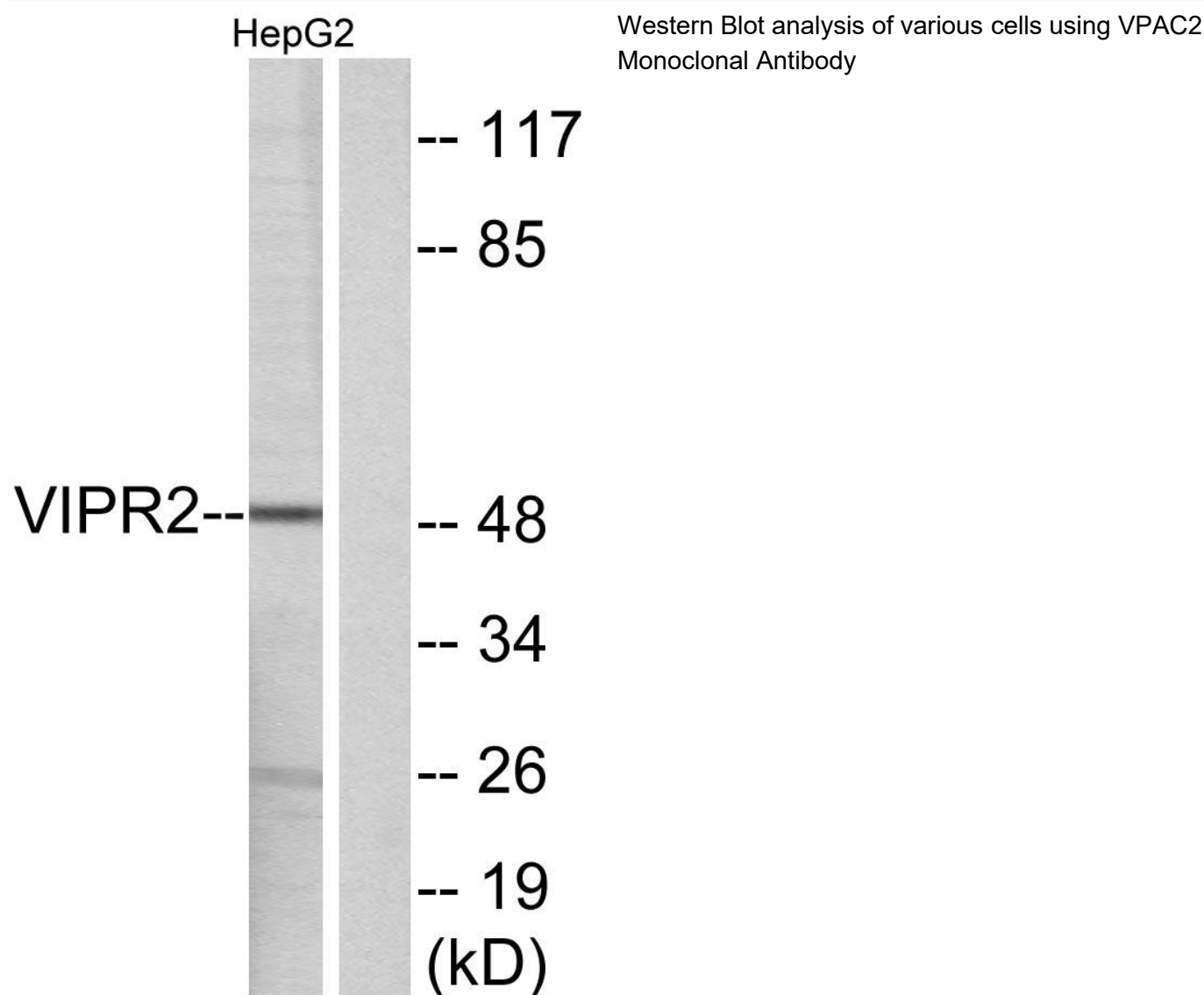
<b>Catalog No</b>	BYmab-13711
<b>Isotype</b>	IgG
<b>Reactivity</b>	Human;Mouse;Rat
<b>Applications</b>	WB
<b>Gene Name</b>	VIPR2
<b>Protein Name</b>	Vasoactive intestinal polypeptide receptor 2
<b>Immunogen</b>	The antiserum was produced against synthesized peptide derived from human VIPR2. AA range:83-132
<b>Specificity</b>	VPAC2 Monoclonal Antibody detects endogenous levels of VPAC2 protein.
<b>Formulation</b>	Liquid in PBS containing 50% glycerol, 0.5% BSA and 0.02% sodium azide.
<b>Source</b>	Monoclonal, Mouse,IgG
<b>Purification</b>	The antibody was affinity-purified from mouse antiserum by affinity-chromatography using epitope-specific immunogen.
<b>Dilution</b>	WB 1:500-2000
<b>Concentration</b>	1 mg/ml
<b>Purity</b>	≥90%
<b>Storage Stability</b>	-20°C/1 year
<b>Synonyms</b>	VIPR2; VIP2R; Vasoactive intestinal polypeptide receptor 2; VIP-R-2; Helodermin-preferring VIP receptor; Pituitary adenylate cyclase-activating polypeptide type III receptor; PACAP type III receptor; PACAP-R-3; PACAP-R3; VPAC2
<b>Observed Band</b>	49kD
<b>Cell Pathway</b>	Cell membrane; Multi-pass membrane protein.
<b>Tissue Specificity</b>	Expressed in CD4+ T-cells, but not in CD8+ T-cells. Expressed in the T-cell lines Jurkat, Peer, MOLT-4, HSB, YT and SUP-T1, but not in the T-cell lines HARRIS and HuT 78.
<b>Function</b>	function:This is a receptor for VIP as well as PACAP-38 and -27, the activity of this receptor is mediated by G proteins which activate adenylyl cyclase. Can be coupled to phospholipase C.,similarity:Belongs to the G-protein coupled receptor 2 family.,tissue specificity:Expressed in CD4+ T-cells, but not in CD8+ T-cells. Expressed in the T-cell lines Jurkat, PEER, MOLT-4, HSB, YT and Tsup-1, but not in the T-cell lines HARRIS and HUT 78.,

**Nanjing BYabscience technology Co.,Ltd**



<b>Background</b>	vasoactive intestinal peptide receptor 2(VIPR2) Homo sapiens This gene encodes a receptor for vasoactive intestinal peptide, a small neuropeptide. Vasoactive intestinal peptide is involved in smooth muscle relaxation, exocrine and endocrine secretion, and water and ion flux in lung and intestinal epithelia. Its actions are effected through integral membrane receptors associated with a guanine nucleotide binding protein which activates adenylate cyclase. [provided by RefSeq, Aug 2011],
<b>matters needing attention</b>	Avoid repeated freezing and thawing!
<b>Usage suggestions</b>	This product can be used in immunological reaction related experiments. For more information, please consult technical personnel.

## Products Images



Nanjing BYabscience technology Co.,Ltd