



# TAAR5 Monoclonal Antibody

<b>Catalog No</b>	BYmab-13692
<b>Isotype</b>	IgG
<b>Reactivity</b>	Human;Rat;Mouse;
<b>Applications</b>	WB
<b>Gene Name</b>	TAAR5
<b>Protein Name</b>	Trace amine-associated receptor 5
<b>Immunogen</b>	The antiserum was produced against synthesized peptide derived from human TAAR5. AA range:288-337
<b>Specificity</b>	TAAR5 Monoclonal Antibody detects endogenous levels of TAAR5 protein.
<b>Formulation</b>	Liquid in PBS containing 50% glycerol, 0.5% BSA and 0.02% sodium azide.
<b>Source</b>	Monoclonal, Mouse,IgG
<b>Purification</b>	The antibody was affinity-purified from mouse antiserum by affinity-chromatography using epitope-specific immunogen.
<b>Dilution</b>	WB 1:500-2000
<b>Concentration</b>	1 mg/ml
<b>Purity</b>	≥90%
<b>Storage Stability</b>	-20°C/1 year
<b>Synonyms</b>	TAAR5; PNR; Trace amine-associated receptor 5; TaR-5; Trace amine receptor 5; Putative neurotransmitter receptor
<b>Observed Band</b>	38kD
<b>Cell Pathway</b>	Cell membrane ; Multi-pass membrane protein .
<b>Tissue Specificity</b>	Expressed almost exclusively in skeletal muscle and selected areas of the brain, such amygdala, hippocampus, caudate nucleus, thalamus and hypothalamus. Weak expression is also find in substantia nigra.
<b>Function</b>	function:Orphan receptor. Ligands are likely small molecules, either sharing some similarities with trace amine as, e.g. derivatives of indolamines (such as 5-methoxytryptamine) or of phenylethylamines (such as phenylethanolamine) or being any kind of metabolite of amino acids or biogenic amine neurotransmitters.,similarity:Belongs to the G-protein coupled receptor 1 family.,tissue specificity:Expressed almost exclusively in skeletal muscle and selected areas of the brain, such amygdala, hippocampus, caudate nucleus, thalamus and hypothalamus. Weak expression is also find in substantia nigra.,

**Nanjing BYabscience technology Co.,Ltd**



### Background

function:Orphan receptor. Ligands are likely small molecules, either sharing some similarities with trace amine as, e.g. derivatives of indolamines (such as 5-methoxytryptamine) or of phenylethylamines (such as phenylethanolamine) or being any kind of metabolite of amino acids or biogenic amine neurotransmitters.,similarity:Belongs to the G-protein coupled receptor 1 family.,tissue specificity:Expressed almost exclusively in skeletal muscle and selected areas of the brain, such amygdala, hippocampus, caudate nucleus, thalamus and hypothalamus. Weak expression is also find in substantia nigra.,

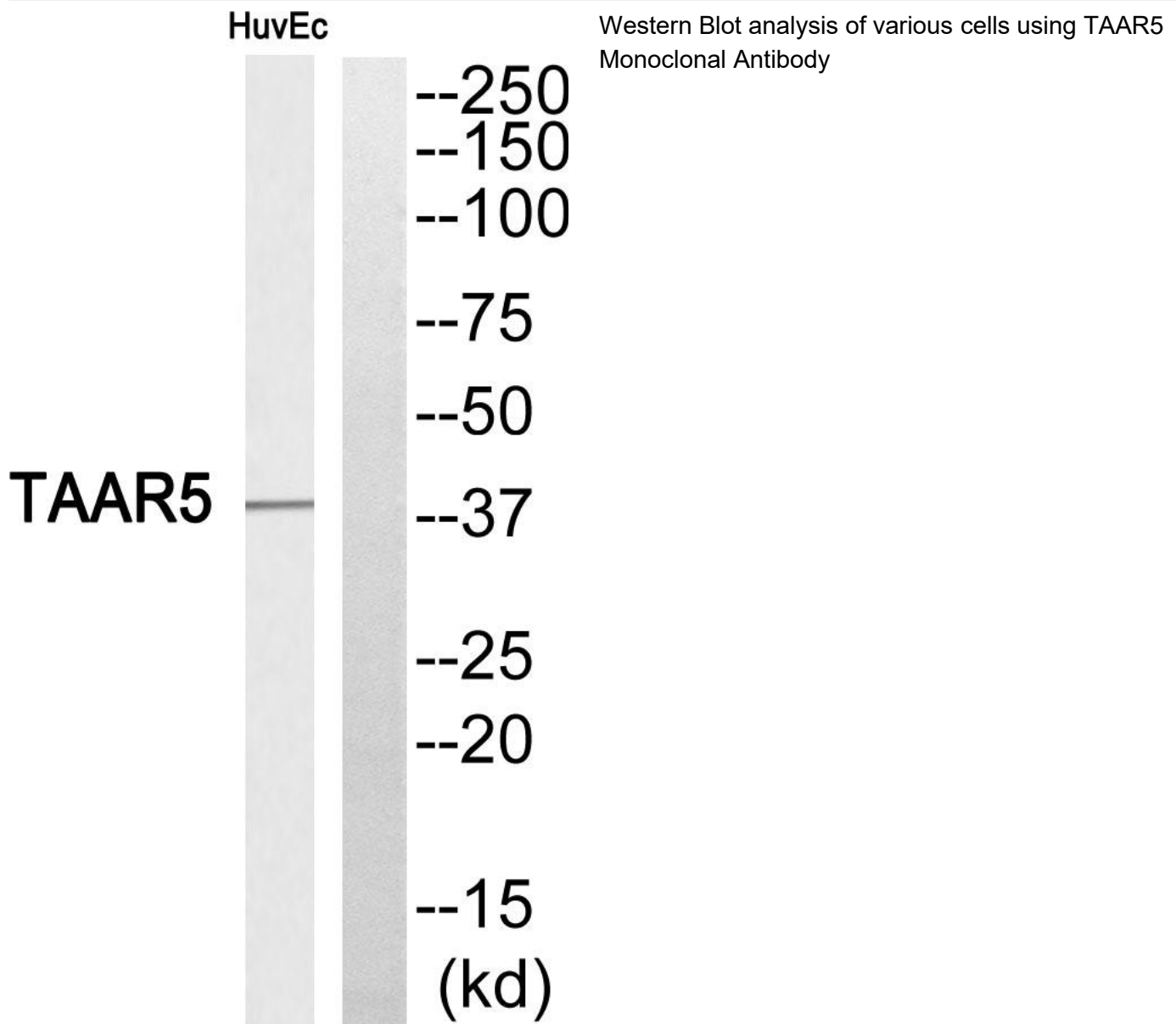
### matters needing attention

Avoid repeated freezing and thawing!

### Usage suggestions

This product can be used in immunological reaction related experiments. For more information, please consult technical personnel.

## Products Images



Nanjing BYabscience technology Co.,Ltd